

Prairie Star Press

Prairie Star Quilt Guild
St. Charles, IL

Volume XLVI
PSQG website: psqg.org

Issue #3
September 2024

FALL INTO THE SEASON

As we slide into Fall, my mind turns to the major events on the calendar. So much to think about at this time: school starting up for all ages – maybe even YOU are taking a new class to improve your skills or learn a new subject. Also, some travel in the Fall to see loved ones or explore a new part of the world. As my brother always said, the “trifecta of children’s holidays,” is headed our way. So much to plan for those days!

Of course, at our guild, we have big plans in the coming weeks. Our quilt show that happens every other year is upon us. The show committee has been working hard to put on a beautiful event that will leave us all inspired and amazed. Our show has some of everything that we appreciate: good food, shopping both from the guild and from awesome vendors, and Quilts, Quilts, Quilts! Many thanks to those of you who have entered a quilt this year. Each quilt represents so many hours of planning, choosing colors and fabrics, executing and, finally,

quilting. Each of you has put in so much effort and time. Your love and enthusiasm for our art and craft of quilting shows in your beautiful work. Thank you also to the large group of women who have entered the Challenge this year. That exhibit will be so much fun to examine and figure out each card type! I love this idea. We’ll have some children’s quilting examples as well.

It takes all of us to put on an event of this size, and our guild can pull it off like a well-oiled machine because of each of you! I know we usually thank you after the show, but I am feeling grateful now for all of the offerings of each member. We have people organizing all of the quilt-related books and patterns, scrap fabric, and quilting things to have a wonderful ‘store’ for us to shop. That is because each of you, at home, sorting through your stashes, your bookshelves and sewing rooms have given your time to donate items to your guild. Pork will be cooked and pulled soon by our food gals!

continued on page 2

In this issue:

Fall into the season	1
Updates & reminders	2-3
Upcoming programs	4-5
Handouts from August.....	6
Birthdays & Board members	7

Upcoming Guild Meetings:

September 23, 2024 at 7 pm
September 24, 2024 at 9:30 am

October 28, 2024 at 7 pm
October 29, 2024 at 9:30 am

All meetings at Congregational
United Church of Christ unless
otherwise noted.

*Congregational United
Church of Christ
40W451 Fox Mill Blvd.
St. Charles, IL*

Next Newsletter Deadline:

Thursday, October 10, 2024.
Send info to Melanie Murphy at
melaniemakeups@gmail.com.

page 1 continued

The room will be decorated for fall, the signs will be put up, etc etc. And finally, we have volunteers who put it all together the days before the show. I am so thankful for all of our members! You need to know that your efforts are appreciated.

On the calendar for November is a social meeting. But it will be so much more than that! Between 10 and 15 of our members will offer their no longer needed quilt-related items for sale at both the AM and PM meetings. At this time we can add two more tables at the PM meeting, but will take names for a waiting list for either.

We will have an abbreviated business meeting at the start,

followed by card making for several charities who could use a lift at this time of year. We are asking for donated card making supplies from those of you who might have been scrapbookers and card makers and have some extra. (This hobby also causes excess supplies, at times, for the maker!) Blank cards and envelopes, writing utensils, various glues, holiday scrapbook papers, ribbons, stickers, etc. are requested. There will be a plastic box for collecting these materials at the October meetings. Leftover greeting cards from former years can also be donated for those that simply want to sign a card but not make one. We will provide a cookie snack

in keeping with the holiday spirit. We encourage everyone to join us, whether you are shopping or not. The more cards we can create, the more cheer we can spread. We will also have library books to take home for the long break. November is our last in-person meeting until March, so be sure to come join us!

My last thought is of our Quilt Show Vendors. Between now and the show, be thinking of supplies you need and can hold off buying until October. Our vendors make a huge effort to support our show. Let's show them our appreciation by supporting them in return!

—Susan E., daytime VP

COMMUNITY PROJECTS

Thank you so much for all you do for our community and the guild's programs!

Make sure to check out tutorials on the website or stop by the Community Projects tables at the meetings to ask questions, see project samples, or pick up a kit or two or three.

Thanks to Rita P. and the Quilts of Valor crews. If you know of a veteran that you would like to nominate for a Quilt of Valor, you may do so by opening a web browser to QOVF.org. Under the heading "Nominations and Awards" you can fill out a Nomination Form. In the notes please add that it is from PSQG, so Rita is aware that the nomination is from our guild.

QOV's National Sew Day is February 3rd, 2025 and locally will be held at the St Charles Moose Lodge, 9am-2pm. Bring your machine, sewing and quilting gadgets (ruler, rotary cutter, etc.). There will be a potluck meal and prizes! A pressing station or two will be provided, so no need to bring your iron. For those who register through the website (QOVF.org) to sew that day, the Foundation will have drawings for prizes. One of the prizes is usually a sewing machine! Rita also receives donations for a "prize bag" for those who attend. Contact Rita P. for more information.

NICU isolette blankets, marble mazes, and fidget quilts are always in need. Kits

are available or you can check out the PSQG Community Projects webpage for videos and size requirements to make them from your own stash. If you have small pieces (~ 5.5" or larger) of unique textured fabrics (no polyester) and no smaller than 25"x25" fleece for fidget quilt kits, please contact Linda S.

Residential Hospice in Lisle asks for quilts and comforters (please no fleece) for their patients. Please do not pass along items that are stained or torn. Remember that these should be a gently loved item. Pin a note to the item if it's been washed (unscented detergent, no softener is preferred) before putting it in a bag to drop off at the

continued on page 3

page 2 continued

Community Project tables. They will also accept fidget quilts and marble mazes. Contact Sheila C.

Thank you to all the incredible supporters of our Quilts for Kids Program. There are lots of kits available and quilts in various stages for you to work on. Contact Sandi W. if you have questions.

Got scraps to fill a pet bed? We have pet bed kits for you!

We are not collecting dog beds. Please drop off your completed dog beds at a shelter or foster near you.

Port pillows provide relief to chemotherapy patients. They are attached to the underside of a crossbody seatbelt and positioned over the patient's infusion port. The pillows are given to Phil's Friends, a local organization that supports those affected by cancer. Kits

are available, although you can use fabric, stuffing, and hook and loop from your own stash. Contact Pam S. and Ann G.

Not sure who to contact? You can email Community Projects via email right on the PSQG website! Your message will be forwarded to the appropriate project leader.

— Sheila C., community projects

QUILT SHOW 2024

We're in the home stretch now! The chill is in the air, so we know the time is coming. Now we turn our thoughts to the last-minute details.

At the September meeting there will be lots of information, and quilt number envelopes will be available.

Volunteers

Have you picked a time to help during show week? There are time slots available and various types of work. The quilt show is a great time to meet new friends who share your love of quilting. Remember, too, you get a free entry ticket when you volunteer.

Please let Ann G. know if you have any questions.

Hostess Houses

Quilt drop-off will take place on Sunday, October 13th. A list of hostess houses will be provided at the September meeting so you can pick a convenient location. Please let Mary C. know if you have any questions.

Books, etc.

Donation time is closed. Please contact Liz F. if you need anything.

Boutique

Donation time is closed. Please contact Sheryl A if you need anything.

Challenge Quilts

DON'T FORGET—Bring your challenge quilts to the September meeting. Find information on the web site or contact Ruthann H. or Barb V.

Fabric Treasures

Thank you very much for all your donations for Fabric Resale. Donation time is closed. Please contact Sue Ann R. if you need anything.

Quilty Items

Donation time is closed. Please contact Barb T and Heidi C. if you need anything.



UPCOMING PROGRAMS

All programs subject to change. More info, sign ups & dates on our website.

September 2024

Anna Maria

October 2024

Quilt show review

November 2024

Fun and fellowship

December 2024

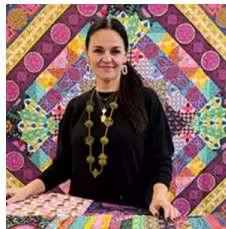
NO MEETINGS.

HAPPY HOLIDAYS

OUR WEB STORE IS OPEN



Place your order and select pick-up instead of shipping. Susan E. will pick up your order and contact you to make arrangements for delivery. We also have the white travel mugs available. Contact Susan E. if you'd like one.
psqgstore.logofactoryusa.com



Anna Maria

Anna Maria will visit with us in September!

All the workshops are sold out, but Sue Ann R. is looking for an extra workshop Angel for Monday (23rd) & Wednesday (25th). Email if you are interested in being a helper to one of these workshops.



Lectures

- Blueprint Quilting on Monday
- Patchwork Pathways on Tuesday

Feather Bed

September 23rd, 2024
9 am – 4 pm
Congregational Church of Christ
40W451 Foxmill Blvd, St. Charles, IL 6017

Applique Stories

September 24th, 2024
6 pm – 9 pm
University of Illinois Ext.
535 S Randall Rd
St. Charles, IL

Folk Flower Quilt

September 25th, 2024
9am – 4pm
University of Illinois Ext.
535 S Randall Rd
St. Charles, IL



OCTOBER

In October we will not have a program. We will have a quilt show review! How fun to have a whole meeting of show and tell!



Why do I label my quilts?

I DO IT FOR MYSELF

- Don't want to rely on my memory
- Do want to take credit for my hard work

I DO IT FOR OTHERS

(quilt historians, recipients of my quilts, future generations of quilters)

- inspire
- intrigue
- provide provenance
- deepen connection and appreciation for the art

I DO IT FOR MY QUILTS THEMSELVES

- endear them to recipients
- better chance of being preserved

* * * * *

Laura's Labeling Anti Perfectionism Manifesto

Anything > Nothing

Late > Never

Incomplete > Nonexistent

Don't let the perfect be the enemy of the good.
Start where you are, do what you can!

What should you put on a quilt label?

It depends on the quilt, but here are 15 ideas!

1. Your name
2. Year of completion (or date, or season)
3. Where you live
4. Long armer's name
5. Quilt's title
6. Recipient name(s)
7. What's the occasion?
8. Swap information
9. Quilt's milestone dates (started, pieced, quilted)
10. Pattern information
11. Notes about special fabrics
12. Historic periods or events
13. Stories
14. Keys (for quilts with secret codes or systems)
15. Meaningful quotes or lyrics

Techniques/Tools to use

- Pen (I like a Pigma Micron 03 pen. Heat set with dry iron!)
- Embroidery (hand or machine)
- Digital printing

These are the methods I use but there are others out there!

How to attach? You can piece it into the back or applique it on, either before or after quilting. You can even directly mark the back of the quilt. I do a mix of everything.

Laura Hartrich 2024 --- laurahartrich.com

Sixteen things to Put on your Quilt Labels

1. **Your name**
2. **Year of completion (or date, or season)**
3. **Quilt's title**
4. **Long armer's name**
5. **Where you live**
6. **Recipient name(s)**
7. **What's the occasion?**
8. **Swap information**
9. **Quilt's milestone dates (started, pieced, quilted)**
10. **Pattern information**
11. **Notes about special fabrics**
12. **Historic periods or events**
13. **Stories**
14. **Keys (for quilts with secret codes or systems)**
15. **Fabric envelope to tuck away words**
16. **Your age, if you're proud like Aunt Edna**



Chrysanthemum

NOVEMBER BIRTH FLOWER

Friendship
Joy
Happiness

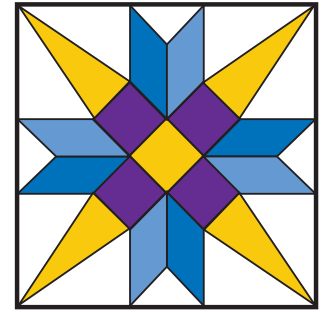


Holly

DECEMBER BIRTH FLOWER

Fertility
Good fortune
Merriment

Happy Birthday to all our members who have their special day in November and December. For privacy, I will no longer list the names here.



2023-2024 BOARD MEMBERS

President:

Cindy Krelle

Evening VP:

Barb Tuman

Daytime VP:

Susan Egner

Programs VP: OPEN

Secretary:

Ruthann Heidgerken

Treasurer:

Lori McMahan

Membership:

Aileen Vogel

Newsletter:

Melanie Murphy

Education:

Chris Schwarz & Foxy Beez

Activities: Nanci McAtee

Media Co-Chairs: Nancy Krasinski & Sue Ann Reiner

Tech support: Chris Macenski

Bee Keeper: Beth Koos

Library: Liz Fitzgerald

Community Projects:

Sheila Cisco

Nominations:

Sue Plaster

Contracts 2024:

Zohra Arastu

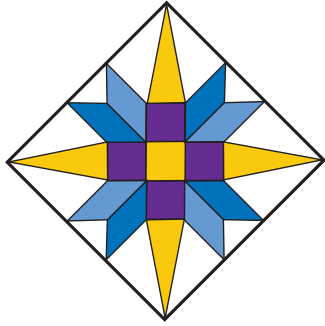
2024 Quilt Show Chairs:

Liz Fitzgerald & Yvonne Richter

YOU'RE INVITED!

Did you know our board meetings are open for any member to attend? The meetings are held every month we have a guild meeting, on the first Tuesday of the month. To attend, drop the President an email so she can send you the Zoom invitation.

SEPTEMBER 2024 ISSUE



Prairie Star Quilt Guild

P. O. Box 1460

St. Charles, IL 60174-1460

FIRST CLASS MAIL

Dated Material

ADVERTISING RATES

1/8 page \$10/issue (business card size)

1/4 page \$20/issue

1/2 page \$40/issue

Above rates apply to a single issue. A purchase of the same-size ad for a year (10 issues) earns a 10% discount. Ads accepted only for quilting or quilt-related subjects and must be prepaid. Refer to our website for details.

Deadline for ads (getting copy or camera-ready artwork to the Editor) is the first of the month in which you wish the ad to appear. Call or email the Editor if you have any questions.

SUBSCRIPTION INFORMATION

Prairie Star Press Subscription Only Rate: Non-members of PSQG wishing a subscription to the Prairie Star Press may subscribe for \$15/year (10 issues). Make check payable to PSQG and send to PSQG, P.O. Box 1460, St. Charles, IL 60174-1460. PSQG trades complimentary issues of the Prairie Star Press with other guilds upon request.