

# Prairie Star Press

Prairie Star Quilt Guild  
St. Charles, IL

Volume XLV  
PSQG website: [psqg.org](http://psqg.org)

Issue #8  
March 2024

## WELCOME BACK!

We will be meeting in person this month! With our month off in December, and Zoom meetings in January and February, it will be nice to see our fellow quilters again. I loved being able to stay home in January when it was below zero outside, and so dark in February, but with Daylight Savings Time starting and feeling warmer outside, I feel this winter is quickly coming to an end....so let's get out and get involved!

A recent PSQG board meeting left me with pages of upcoming activities and ways to meet people in our guild. The board is working hard to get you involved on

many levels. Please read this newsletter carefully as it contains info on the By Laws changes, our April business meeting, the continuing slate of officers, the May banquet, our quilt show, bus trips, workshops (we still need a few signups for this month), and areas you can volunteer. Quilt show entry forms will be out so get busy on your quilts. Also, check out the website home page...so much information!

See you at this month's meeting when we welcome Mary Alice Hart.

— Cindy Krelle, President



## In this issue:

Welcome back .....	1
Updates & reminders ....	2-7
Upcoming programs .....	8-9
Salt Creek fabric sale .....	10
You're invited .....	11
Birthdays & Board members .....	11

## Upcoming Guild Meetings:

March 25, 2024 at 7 pm  
March 26, 2024 at 9:30 am

-----  
April 22, 2024 at 7 pm  
NO MORNING MEETING

All meetings at Congregational  
United Church of Christ unless  
otherwise noted.

*Congregational United  
Church of Christ  
40W451 Fox Mill Blvd.  
St. Charles, IL*

## Next Newsletter Deadline:

Thursday, April 4, 2024.  
Send info to Melanie Murphy at  
[melaniemakeups@gmail.com](mailto:melaniemakeups@gmail.com).



## UPCOMING RETREATS & EVENTS

The Virtual Zoom Retreats continue on the 4th weekend of every month, Saturday and Sunday.

The next chat is March 23 & 24. [Email activities to sign up](#) and receive your zoom invitation. Come join in on the fun!

The in-person retreat at the Hampton Inn North Aurora is coming up fast! March 14-17, \$75 per person, and there is room for three more quilters.

Details are on the website: <https://psqg.org/activities/retreat-registration/>.

Thank you all for answering the survey about the bus trip. We will plan for a bus trip in the future, but after gathering all the details about Grand Rapids this year, that trip is not feasible. We will keep you updated as future trips develop.



## MAY BANQUET

Our annual banquet is May 20th at St. Andrew's Golf Course in West Chicago. Dinner will be served promptly at 6pm and there will be a cash bar.

For those who haven't attended a banquet before, this is a social event with a keynote speaker, and it's a great opportunity to meet other quilters and make new friends, or reconnect with friends you haven't seen in awhile. Typically we have tables seating 8, and groups can sign up to sit together. We encourage you to sign up as a single and let us choose your table for you, much like our Zoom breakout rooms. Meeting new quilting friends can be fun, and you know with this group we all have one topic of conversation to break

the ice with — quilting!

Sign ups and payment will be on the PSQG website soon. There will also be an opportunity to sign up in person at the April meeting.

Entrees will be the same as previous years. Let Nanci M. know if you need a gluten free option:

- Garlic Pesto Gnocchi with vegetables (vegetarian) - \$41.00
- Champagne Chicken - \$42.00
- Grilled Bone-in Pork Loin with maple bourbon glaze - \$44.00

The entrees also include Italian Minestrone soup, St. Andrews garden salad, roasted red potatoes, steamed vegetable medley, chocolate cake, water, tea, and coffee.

## MEMBERSHIP RENEWAL TIME

It's time to think about membership renewal. For those who are new to the guild, our guild fiscal year begins June 1st and ends May

31st. Membership renewal is still \$35.

Online renewal opens soon, or you can renew in person at the April or May meetings.

Please consider updating your information and paying your dues online when renewal opens.



# COMMUNITY PROJECTS

Thank you so much for all you do for our community! Make sure to check out tutorials on the website or stop by the Community Projects tables at the meetings to ask questions, see project samples, or pick up a kit or two.

Thanks to Rita P. and the Quilts of Valor crews. They are always busy making stunning quilts for service members. When you submit a QOV quilt, please attach a slip with your name and city to be added to the label. Recommended quilt sizes are on the PSQG website. Contact Rita if you have questions or would like to stop by to help at the monthly events at the Moose Lodge in St. Charles on the 1st Tuesdays or at the VFW in Montgomery on the 3rd Tuesdays. **There will be a different location for the March 19 event at the Montgomery VFW due to election day.** Contact Rita P. for more information.

NICU isolette covers, fidget quilts, and marble mazes are always in need! Kits are available or you can check out the PSQG Community Projects webpage for videos and size requirements. Marianjoy Rehabilitation Hospital is delighted with and

appreciative of the fidget quilts and marble mazes that you've made. Contact Linda S.

Have you changed your décor or are you tired of quilts you made long ago and looking to give them a new home that's not Goodwill? We have a new program to add to our community service efforts. Residential Hospice in Lisle is asking for quilts and comforters of any size (please no fleece) for their patients. Please do not pass along items that are stained or torn. Remember that these should be gently loved items! Pin a note to the item if it's been washed (unscented detergent, no softener is preferred) before putting it in a bag to drop off at the Community Service tables. They will also accept fidget quilts. Stay tuned for more information about various ways to make them. Contact Sheila C.

Thank you to all the incredible supporters of our Quilts for Kids Program who stopped by the March DiMiGi event. We made kits and gathered fabrics to make about fifty quilts! Contact Sandi W. if you have questions.

Finished 3' x 6' mats for the homeless are still being

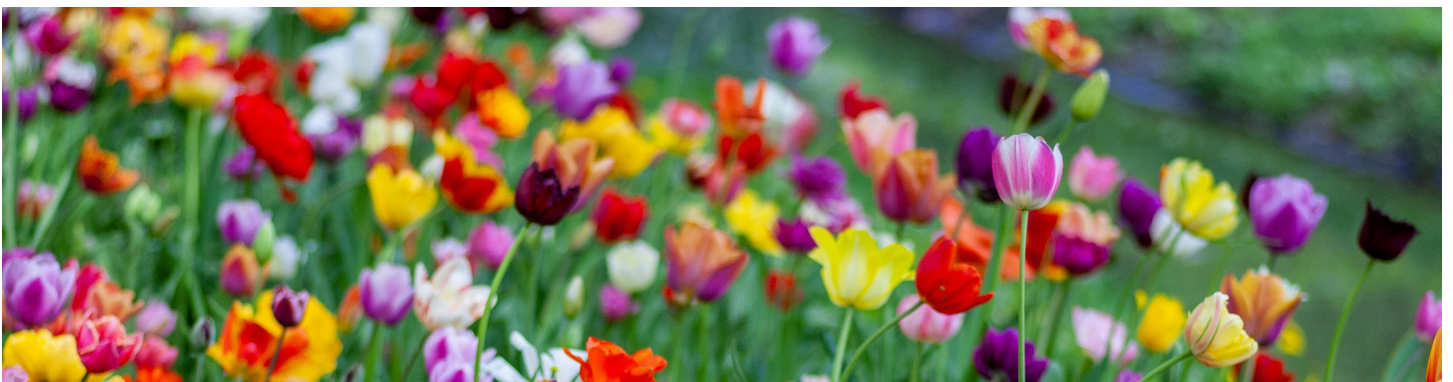
collected! If you don't crochet, how about doing some recycling and making balls of Plarn for those who do? Contact Joyce J.

Got scraps to fill a pet bed? We have pet bed kits for you! PLEASE note that we've been informed that Anderson Animal Shelter in South Elgin is no longer accepting pet beds. We are not collecting dog beds. Please drop off your completed dog beds at a shelter or foster near you. The list on the website has been updated with the recent change.

Port pillows provide relief to chemotherapy patients. They are attached to the underside of a crossbody seatbelt and positioned over the patient's infusion port. The pillows are given to Phil's Friends, a local organization that supports those affected by cancer. Kits are available, although you can use your own fabric, stuffing, and hook and loop tape. Contact Pam S. and Ann G.

Not sure who to contact? You can email Community Projects via email right on the PSQG website! Your message will be forwarded to the appropriate project leader.

— Sheila C.



# QUILT SHOW 2024

We are making progress and have most of the positions for the October show filled. We still need someone to chair the set-up and take-down of quilts, someone to put up and take down signs, and a group to be involved in transporting pipes, drapes, and other stuff to and from the storage unit. If you can help out, please let us know. These are essential jobs involving work during the week of the show.

The entry forms for the show and for judged quilts will be available soon. You can turn them in at a meeting or mail them in. (Address will be provided on the form.) The tops don't have to be finished to enter, but need to be finished with hanging sleeve for the show.

— Liz F. & Yvonne R.

## Boutique

Make some items for the Instant Gratification Boutique while you're keeping warm this winter. Think of items that you would love to get from a friend; that is what we are seeking. Any questions, feel free to contact me. Thanks in advance for your creativity, help, and contributions. Contact Sheryl A, Boutique Chair.

## Books, etc.

Time to clean your sewing room! Now is the time to start donating your old books, magazines and patterns to the Quilt Show for us to sell and for others to enjoy.

From past Quilt Shows, we have learned that not all books and magazines will sell.

We are limiting donations to newer books, which are books with copyrights from 2000 through 2023. We have found that the premium quilting magazines, art quilting magazines, and foreign magazines will sell.

We are limiting donations of magazines to include ones like *Quiltmania*, *Simply Moderne*, *Simply Vintage*, *Quilting Arts*, *Piecework*, and magazines from other countries like *Today's Quilter*, *Love Patchwork and Quilting*, *Quilter's Companion*, and *Make Modern*. We will accept any patterns, but they must be complete.

There are a few exceptions to these rules. Please ask if you have any questions.

We will accept donations starting in March, as well as all in-person Guild meetings in 2024, through September. Bring donations to the Opportunity Quilt table or let us know and we will get them from your car. Any questions? Contact Liz F.

## Quilty Items

It is time to start gathering quilty items to donate for the 2024 quilt show. Items should be gently used; rulers, sewing supplies, and quilt-related gift items are all welcome. We will have open trunks at the March meetings and beyond. Start gathering your trinkets to be sold at the quilt show.

Contact Barb T and Heidi C.



## Fabric Resale

Quilty Resale is looking for a volunteer to oversee Orphan Blocks.

A reminder about prepping your donation <https://psqg.org/wp-content/uploads/PSQG-Fabric-Resale.pdf>.

If you

- have any questions or concerns,
  - would like to donate fabric but can not prep it all on your own,
  - would like to help another member organize their donation,
  - have a time sensitive need to donate fabric,
- please contact me.

Thank you for helping our Guild keep being incredible!

— Sue Ann R., Fabric Resale Chair



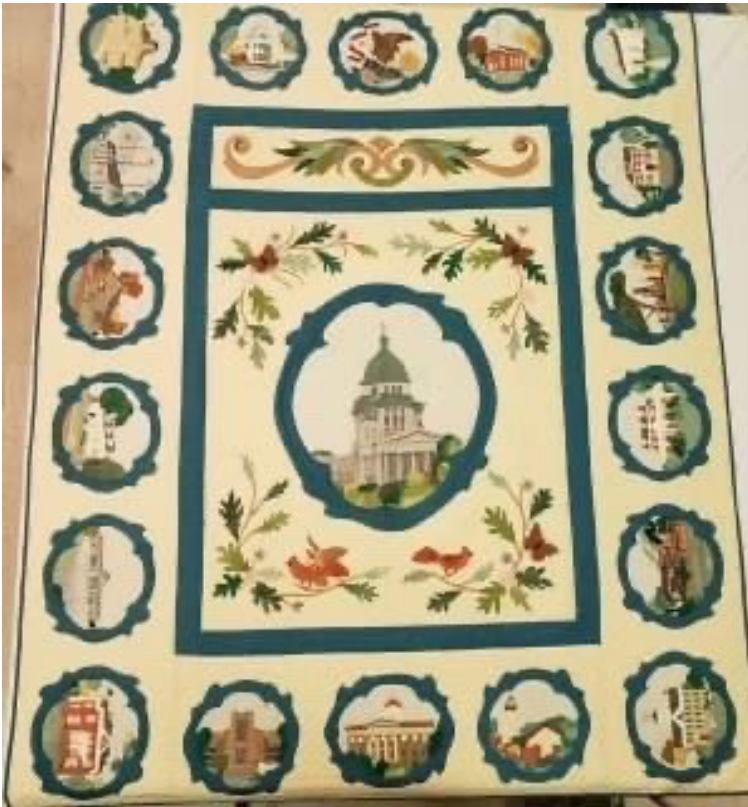
## COMMUNITY OUTREACH

Earlier this month, several members of our Guild did a presentation at the Westbridge Assisted Living facility in Wheaton. Their topic? The history of quilting including the quilt made in 1987 by then-members of the PSQG which was presented to

Governor Thompson to be used in the Executive Mansion.

Thank you to the residents and staff for their warm and exuberant welcome in response to the presentation. In addition to some history, we each shared our respective quilting journeys. The house

was packed and many lingered after to ask questions and share their own quilting memories. This was truly a day when the presenters were very likely more enriched by the experience than the attendees.



# BOARD VOTING AND BY-LAW CHANGE SEASON

At the April business meeting, we hold our elections. We vote on and formally elect the new slate of board members for the coming fiscal year. Our by-laws require we announce the new slate of board members at least 30 days before the election. The slate is listed on the next page.

We have a few changes to the policies and by-laws, which must also be announced 30 days prior to the election, and voted on by the general membership.

## Proposed by-law changes

### Article II. Meetings of the Guild

Section 2. Combined meetings of the Chapters may be held with the cooperation of the Chapter Vice-Presidents, ~~Programs Vice-President~~ and the approval of the Board of Directors, hereafter known as the "Board." These combined meetings may include the Guild's Annual Banquet in May and ~~any~~ Guild ~~annual~~ social meeting. ~~in the summer.~~

### Article IV. Elections

Section 3. President, ~~Contracts/Program Vice-President~~ and Treasurer shall serve two-year terms, ~~may serve a second two-year term~~, and shall not be elected to a third consecutive term. All remaining elected Board members shall serve one year terms ~~with no term limits~~.

### Article V. Boards and Officers

Section 2. The Board shall consist of the Executive Board and the chairperson of the following Committees: Activities, Beekeeper, Education, Community Projects, Contracts, Library, Media, Membership, Newsletter, Nominating, and Quilt Show. The Board shall meet monthly except in December to manage the affairs of the Guild.\* The term of office will begin on June 1st. A quorum for conducting business at a Board meeting is a simple majority of the Board. \* ~~With the possible exception of the Contracts Chair/Programs VP, the term of office will begin on June 1st.~~

### Article VI. Duties of the Executive Board Officers

Section 1. The President shall preside at all Board meetings, Executive Board meetings, the Annual Meeting, the Guild Annual Banquet joint meeting, any other joint Chapter meetings and at Chapter meetings in the absence of the Chapter Vice President. The President shall be an ex-officio member of all Committees except the Nominating Committee and shall perform such duties as are necessary to the office. The President shall appoint any committee chair not otherwise provided for in these Bylaws. The President shall co-sign, with the Contracts Chair, all contracts relating to guest speakers. Any other contracts must be co-signed by the appropriate Board member and the President. The President

casts a vote only to break a tie in Board decisions. If the President cannot preside over a Board meeting or a joint meeting for the Guild, ~~the~~ ~~Programs~~ any available Vice-President shall preside over that meeting.

Section 2. The Programs Vice-President has completed ~~a year~~ as Contracts Chair and shall have the primary responsibility for producing the monthly meeting programs and workshops, when offered. The Programs Vice-President has completed ~~a term as defined by the Board~~ as Contracts Chair

### Article VII. Duties of Board Members

Section 5. The Contracts Chair shall be elected to a ~~one two-~~ year term. The first ~~half year~~ shall be served as Contracts Chair and the second ~~half~~ as Programs Vice-President.

### Article IX. Meetings of the Board

Section 1. The Executive Board shall meet ~~as needed annually~~ to renew the corporation charter, but may also meet when the President or two members of the Executive Board request an emergency meeting.

Section 2. The Board shall meet monthly except in December.

Section 3. ~~In June,~~ Following the election of officers, there shall be a joint crossover meeting of the outgoing and incoming Boards to effect a smooth transition. This



meeting shall be convened by the outgoing President and turned over to the incoming President.

## Proposed policy changes

### MEMBERSHIP DEFINITIONS

2. An active member in the Guild participates in several of the following, 1) completing at least one community project, ~~2) assisting with Hospitality for at least one monthly chapter meeting (bringing refreshments, helping with set-up or clean-up, etc.); 2~~ 3) supporting the biennial quilt show by volunteering time, selling opportunity quilt tickets, contributing to the boutique and show giveaways, etc., and ~~3 4)~~ volunteering for other opportunities offered by the guild.

3. ~~2) assisting at monthly chapter meetings (helping with set-up, clean-up, quilt holding, etc.)~~

### PROGRAMS

1. A listing of programs for the upcoming year shall be presented at the annual business meeting if possible. ~~Earlier presentations may be necessary to help promote workshops for the earlier part of that year. Earlier presentations may be made as needed.~~

3. Speakers' travel expenses and arrangements will be ~~managed by the Programs Chair.~~ A convenient hotel room, when necessary, will be reserved for the speaker. No more than two guild members will be reimbursed up to \$15 per person per meal for hosting a meal

with the speaker. Mileage reimbursement charged by a speaker, Program Vice President, or guild member shall be paid according to the IRS per diem rate at time of service.

3. Speakers' travel expenses and arrangements will be ~~coordinated by the Contracts Chair or Programs VP who arranged for the speaker.~~ A convenient hotel room, when necessary, will be reserved for the speaker ~~by the Treasurer.~~

### WORKSHOPS

1. Workshops will be announced as soon as possible, preferably three months in advance. Workshops will be open only to members for at least 30 days then may be opened to non-members at the discretion of the ~~Contracts Chair or~~ Program Vice-President. Non-members may be charged a non-member price.

2. Fees for workshops will be set by ~~the Contracts Chair or Programs VP~~ and approved by the Board. Workshop fees should cover all workshop expenses and a portion of the travel fees. Enrollment of three-fourths of the workshop should cover expenses and the Board can approve deviation on a case-by-case basis. The Programs Chair will determine the minimum enrollment . . .

### GIFTS AND MEMORIALS

A quilting-related item will be donated in memory of any deceased member ~~to the member's local library or the Guild library.~~ The suggested amount is up to \$50.00.

## 2024/2025

### SLATE:

President: Cindy Krelle

Evening VP: Barb Tuman

Daytime VP: Susan Egner

Secretary: Ruthan Heidgerken

Treasurer: Lori McMahon

Membership: Aileen Vogel

Newsletter: Melanie Murphy

Education: Chris Schwarz

Community projects: Sheila Cisko

Activities: Nanci McAtee

Media: Nanci Krasinski & Sue Ann Reiner

Tech Support: Chris Macenski & **OPEN** for co-chair

Beekeeper: Beth Koos

Library: Liz Fitzgerald

Contracts (June -December 2024) / Programs VP January-May 2025: **OPEN**

Programs VP: Terri Martin & Susie Shaddle (June-Nov 2024)

Nominations: **OPEN**

Open positions need to be filled. If you are interested, or know someone who might be interested, please contact Sandra Andrews or any other current board member.

## UPCOMING PROGRAMS

All programs subject to change. More info & dates on our website.

**March 2024**

Mary Alice Hart

**April 2024**

Business Meeting

**May 2024, Banquet**

Cheryl Sleboda

## OUR WEB STORE IS OPEN



Place your order and select pick-up instead of shipping. Susan E. will pick up your order and contact you to make arrangements for delivery. We also have the white travel mugs available. Contact Susan E. if you'd like one.

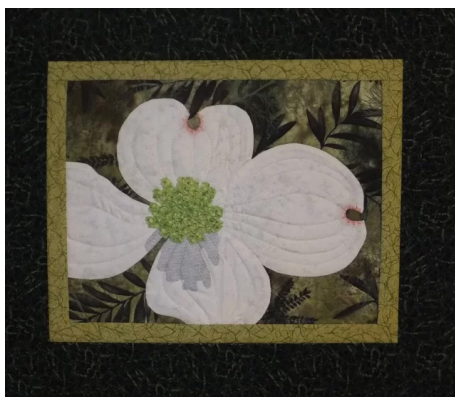
[psqgstore.logofactoryusa.com](https://psqgstore.logofactoryusa.com)



## MARY ALICE HART

Get ready to meet Mary Alice Hart in March. She will present two lectures; "From photo to fabric" on Monday night, and "Trash to treasure" on Tuesday morning.

Read more about her background on the website, and sign up for one of her two workshops to learn new techniques from another great speaker.



### From Photo to Fabric Dogwood

March 25, 2024

10 am – 4 pm

\$40 + \$5 Kit  
Kit payable in class

Congregational United  
Church of Christ



### Scrappy Play

March 26, 2024

1 – 4 pm

\$25

Congregational United  
Church of Christ



# UPCOMING WORKSHOPS

Our workshops are ready for sign-ups! Find what appeals to you and register ASAP. Don't hesitate to sign up online today or stop by the table at a meeting.

## May 2024

**Cheryl Sleboda** will have two workshops. See the website for details.



### What in Carnation?

May 21, 2024

9 am – 12 pm

\$30

U of I Extension  
535 S Randall Rd  
St. Charles, IL



### Artist Trading Card

May 21, 2024

6 pm – 9 pm

\$30 + \$20 kit fee

U of I Extension  
535 S Randall Rd  
St. Charles, IL

## June 2024

**Maday Delgado** will have two workshops. See the website for details.



### The Chaos of Perfection

June 25, 2024

6 pm – 9 pm

\$55 + \$20 Kit Fee = \$75 total

U of I Extension  
535 S Randall Rd  
St. Charles, IL



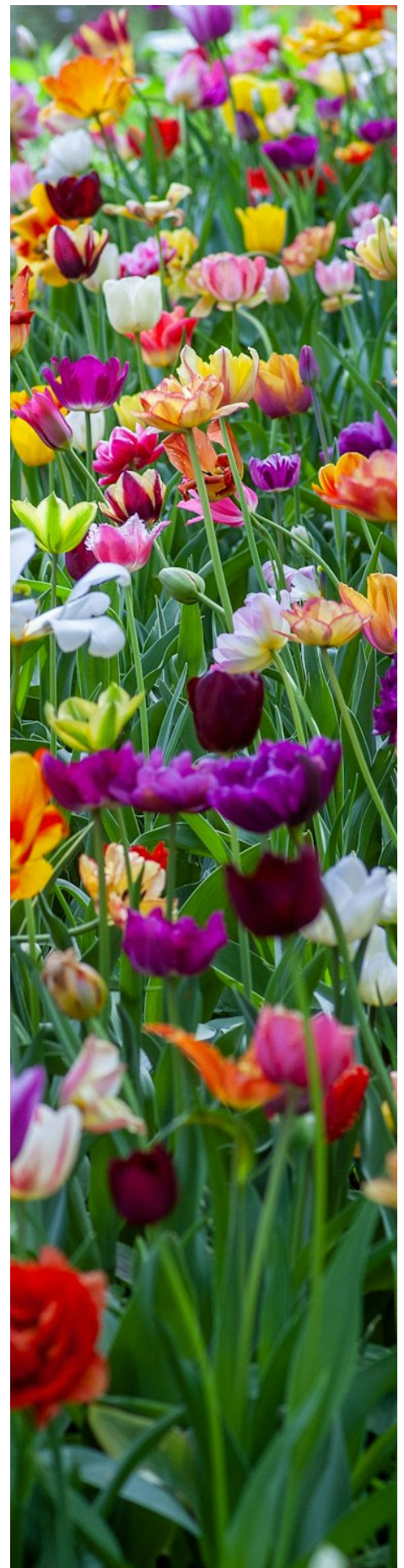
### Improv Curve Piecing without templates

May 26, 2024

9 am–4 pm

\$75

U of I Extension  
535 S Randall Rd  
St. Charles, IL





## **Salt Creek Quilters Guild Fabric Sale**

**April 19 & 20, 9am-1pm**

- **over 4000 yards**
- **majority is quilt store quality fabric**
- **all sizes from coordinated scrap bags to many large pieces for backings**
- **\$12 per pound (about \$3.50 per yard)**
- **some notions and kits**

**Cash only**

**½ price sale Saturday April 20 3-5 pm**

**305 50<sup>th</sup> Place**  
**Western Springs**  
**[saltcreekquiltguild@gmail.com](mailto:saltcreekquiltguild@gmail.com)**

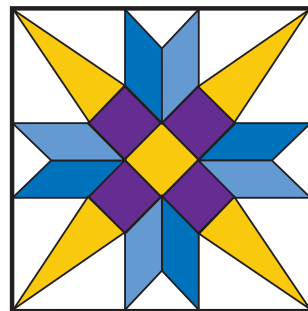




*Lily of the Valley*

## MAY BIRTH FLOWER

Humility  
Purity  
Sweetness



## 2023-2024 BOARD MEMBERS

### **President:**

Cindy Krelle

### **Evening VP:**

Barb Tuman

### **Daytime VP:**

Susan Egner

### **Programs VP:**

Sue Ann Reiner

### **Secretary:**

Ruthann Heidgerken

### **Treasurer:**

Lori McMahon

### **Membership:**

Aileen Vogel

### **Newsletter:**

Melanie Murphy

### **Education:**

Chris Schwarz & Foxy Beez

### **Activities:**

Nanci McAtee

### **Media Chair:**

Chris Macenski

### **Bee Keeper:**

Beth Koos

### **Library:**

Liz Fitzgerald

### **Community Projects:**

Sheila Cisco

### **Nominations:**

Sandy Andrews

### **Contracts 2024:**

Terri Martin &  
Susie Shaddle

2024 Quilt Show Chairs:

Liz Fitzgerald & Yvonne Richter



*Rose*

## JUNE BIRTH FLOWER

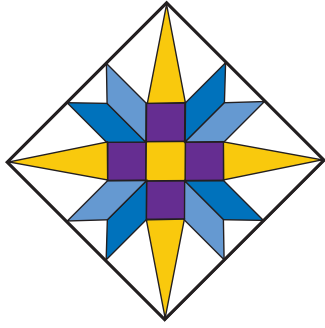
Love  
Beauty  
Honour

*Happy Birthday to all our members who have  
their special day in May and June.  
For privacy, I will no longer list the names here.*

## YOU'RE INVITED!

Did you know our board meetings are  
open for any member to attend?  
The meetings are held every month  
we have a guild meeting,  
on the first Tuesday of the month.  
To attend, drop the President an email  
so she can send you the Zoom invitation.

# MARCH 2024 ISSUE



Prairie Star Quilt Guild

P. O. Box 1460

St. Charles, IL 60174-1460

FIRST CLASS MAIL

Dated Material

## ADVERTISING RATES

1/8 page      \$10/issue (business card size)

1/4 page      \$20/issue

1/2 page      \$40/issue

Above rates apply to a single issue. A purchase of the same-size ad for a year (10 issues) earns a 10% discount. Ads accepted only for quilting or quilt-related subjects and must be prepaid. Refer to our website for details.

Deadline for ads (getting copy or camera-ready artwork to the Editor) is the first of the month in which you wish the ad to appear. Call or email the Editor if you have any questions.

## SUBSCRIPTION INFORMATION

**Prairie Star Press Subscription Only Rate:** Non-members of PSQG wishing a subscription to the Prairie Star Press may subscribe for \$15/year (10 issues). Make check payable to PSQG and send to PSQG, P.O. Box 1460, St. Charles, IL 60174-1460. PSQG trades complimentary issues of the Prairie Star Press with other guilds upon request.