

Prairie Star Press

Prairie Star Quilt Guild
St. Charles, IL

Volume XLV
PSQG website: psqg.org

Issue #11
June/July 2024

HAPPY NEW YEAR!

June 1st was the start of our fiscal year. This coming January we will begin our 45th year as a guild! A dear friend of mine, Jill Stolpestead, is our founding member and she frequently asks how “we” are doing. I always tell her that our guild is growing and doing great....and that we have fabulous members!

Our wonderful banquet speaker was informative while infusing plenty of entertaining humor. It is my hope that this kind of excitement will set the tone for our upcoming year. I have to say, our board (all but two people) have returned and are really dedicated and know their stuff. We are a finely tuned machine. I truly appreciate them for their

respectful and conscientious work. There are lots of ways you can contribute to the workings of our guild. Community Projects has ongoing opportunities, as well as our biggest event of the year....our quilt show. They are still needing help in many areas, not just as a committee head, but the actual three days of the show. Please volunteer and support our show as this revenue will be used to fund future speakers.

It has been a pleasure being your president and I look forward to this upcoming year with excitement and enjoyment for our love of quilting.

— Cindy Krelle, PSQG
President

In this issue:

Happy New Year.....	1
Updates & reminders	2-5
Upcoming programs	6-7
Shop hop ad.....	8
Birthdays & Board members	9

Upcoming Guild Meetings:

June 24, 2024 at 7 pm
June 25, 2024 at 9:30 am

July 22, 2024 at 7 pm
July 23, 2024 at 9:30 am

All meetings at Congregational
United Church of Christ unless
otherwise noted.

*Congregational United
Church of Christ
40W451 Fox Mill Blvd.
St. Charles, IL*

Next Newsletter Deadline:

Thursday, August 8, 2024.
Send info to Melani Murphy at
melaniemakeups@gmail.com.



MEMBERSHIP RENEWAL TIME



June 1 is the start of our new fiscal year. Membership renewal is still \$35.

[Online renewal](#) is open, or you can renew in person at the June meetings.

Please consider updating your information and paying your dues online; updating is easier for us that way.

If you have questions, please email AVogelsew@aol.com or call 847-721-1021.

UPCOMING RETREATS & EVENTS



The Virtual Zoom Retreats continue on the 4th weekend of every month, Saturday and Sunday.

The next chat is June 22 & 23. [Email activities to sign up](#) and receive your zoom invitation. Come join in on the fun!

We are having a two-day sew-in—Friday, August 9, and Saturday, August 10—at the U of I extension building on Randall Road. The cost will be \$26 by credit card. You will get a \$1 discount (\$25 fee) if you pay by cash or check. Contact Nanci M. or visit the website to sign up.

BEE KEEPER BUZZ

Our bees are all going well. One member is interested in starting an evening or weekend bee in the Huntley area.

I have a beautiful selection of sewing-themed fabric that was donated to the guild. Over

the next few months I will be promoting this fabric for members to use to make items for the boutique. If you use the fabric to make something, but have extra left over, please bring it back to the next meeting. Hopefully another

member will have a different idea for its use. As we get closer to our show, whatever fabric is still left will be donated to the fabric treasures sale.

— Beth Koos, Bee keeper

COMMUNITY PROJECTS

Thank you so much for all you do for our community and the guild's programs! Our program leaders are very appreciative of all the beautiful items that were made throughout the winter months and for your generous donations of fabric and sewing supplies.

Make sure to check out tutorials on the website or stop

by the Community Projects tables at the meetings to ask questions, see project samples, or pick up a kit or two or three!

Thanks to Rita P. and the Quilts of Valor crews. They are always busy making stunning quilts for service members. When you submit a QOV quilt, please attach a slip with your name and city to be added to

the label. Recommended quilt sizes are on the PSQG website. At this month's meetings there will be quilts that will need quilting. Contact Rita if you would like to help with the quilting, have questions, or would like to stop by to help at the monthly events at the Moose Lodge in St. Charles on the 1st Tuesdays or at the VFW in Montgomery on the 3rd

COMMUNITY PROJECTS CONTINUED

Tuesdays.

NICU isolette covers, marble mazes, and fidget quilts are always in need! Kits are available or you can check out the PSQG Community Projects webpage for videos and size requirements to make them from your own stash. Contact Linda S.

Residential Hospice in Lisle is asking for quilts and comforters of any size (please no fleece) for their patients. Please do not pass along items that are stained or torn. Remember that these should be gently loved items! Pin a note to the item if it's been washed (unscented detergent, no softener is preferred) before putting it in a bag to drop off at the Community

Project tables. They will also accept fidget quilts and marble mazes. Contact Sheila C.

Thank you to all the incredible supporters of our Quilts for Kids Program. We have lots of kits available and quilts in various stages for you to work on. Contact Sandi W. if you have questions.

Finished 3' x 6' mats for the homeless are still being produced but Joyce J. will no longer be collecting plarn made from single use plastic grocery bags. Thank you, Joyce! If you are interested in helping with this effort, please contact Sheila C.

Got scraps to fill a pet bed? We have pet bed kits for you! We are not collecting dog beds. Please drop off your completed

dog beds at a shelter or foster near you.

Port pillows provide relief to chemotherapy patients. They are attached to the underside of a crossbody seatbelt and positioned over the patient's infusion port. The pillows are given to Phil's Friends, a local organization that supports those affected by cancer. Kits are available, although you can use fabric, stuffing, and hook and loop from your own stash. Contact Pam S. and Ann G.

Not sure who to contact? You can email Community Projects via email right on the PSQG website! Your message will be forwarded to the appropriate project leader.

— Sheila C.

NEW COMMUNITY OUTREACH INITIATIVE

Your wonderful Community Projects Committee has added another quilty opportunity to their outreach initiatives. This one has a twist. Instead of members bringing quilts to the Guild; the Guild will bring quilting to others.

Do you have a loved one in an area senior living residence who would enjoy a quilt presentation by Guild members? If so, begin by sharing the following description with that facility's Activity Director. If they are interested, we'll take it from there.

"Hear a brief history of quilting including its functionality and the beauty of stitching together layers of fabric. Members of the Prairie

Star Quilt Guild from St. Charles, IL will share a brief history of quilting and their respective journeys as quilters. Examples of their work will be on hand for you to see, touch, and possibly prompt you to share a few quilting memories of your own. This presentation runs approximately 45-60 minutes."

After the presentation is shared, there is an opportunity for interested participants to have us return with supplies for them to create quilt blocks that will be made into one of the children's quilts for our hospital donations.

If you're interested in being part of the presentation team, also reach out for more information. We would love to have a pool of members who would like to participate in the presentations as well as quilt block creation.

Contact Nancy K. for more information.



QUILT SHOW 2024



The next quilt show meeting is scheduled for June 12 at 7 pm via Zoom. Contact Liz or Yvonne if you need an invitation.

The entry forms for the [show quilts](#) and for [judged quilts](#) are available. You can also turn them in at a meeting or mail them in. (Address provided on the form.) The tops don't have to be finished to enter, but need to be finished with a hanging sleeve for the show.
— Liz F. & Yvonne R.

Books, etc.

Time to clean your sewing room! Donate your old books, magazines and patterns to the Quilt Show for us to sell and for others to enjoy.

We are limiting donations to newer books, which are books with copyrights from 2000 through 2023. We have found that the premium quilting, art quilting, and foreign quilting magazines will sell.

We are limiting donations of magazines to include ones like *Quiltmania*, *Simply Moderne*, *Simply Vintage*, *Quilting Arts*, *Piecework*, and magazines from other countries like *Today's Quilter*, *Love Patchwork and Quilting*, *Quilter's Companion*, and *Make Modern*. We will accept any patterns, but they must be complete.

There are a few exceptions to these rules. Please ask if you have any questions.

We are accepting donations at all in-person Guild meetings through September. Bring donations to the Opportunity Quilt table or let us know and we will get them from your car. Any questions? Contact Liz F.

Boutique

Make some items for the Instant Gratification Boutique. Think of items that you would love to get from a friend; that is what we are seeking. Any questions, feel free to contact me. Thanks in advance for your creativity, help, and contributions.

— Sheryl A, Boutique Chair.

Challenge Quilts

Keep working on your challenge quilts. We will start collecting them at the August meeting.

We have distributed all but four cards, so it should be a really complete and fun display. If you are interested in one of the remaining cards, contact Ruthann H., or Barb V.

Fabric Treasures

Our Fabric Resale, along with the Books, Patterns, Magazines, etc. allows PSQG to continuously offer incredible speakers.

We will be collecting Fabric Donations just inside the front door of the gym at the meetings. If you need assistance in unloading it from your car please let us know. Please sort your donation as directed in the instructions here: <https://psqg.org/wp-content/uploads/PSQG-Fabric-Resale.pdf>

At this time, we are collecting quilt shop quality cotton woven fabric, flannel precut bundles and wool scraps for resale in the groupings listed on the donation instructions.

If you have any questions, concerns, would you like to donate fabric but can not prep it yourself or are unable to bring it to a meeting please contact Sue Ann R., Fabric Resale Chair.

Quilty Items

It is time to start gathering quilty items to donate for the 2024 quilt show. Items should be gently used. Rulers, sewing supplies, and quilt-related gift items are all welcome. We will have open trunks at the in-person meetings. Start gathering your trinkets to be sold at the quilt show. Contact Barb T and Heidi C.

JUNE/JULY WORKSHOP OPENINGS

Maday Delgado will have two workshops in June. Visit the website for more details and to sign up.



The Chaos of Perfection

Tuesday, June 25, 2024

6 pm – 9 pm

\$55 + \$20 Kit Fee = \$75 total

U of I Extension
535 S Randall Rd
St. Charles, IL



Improv Curve Piecing without templates

Wednesday, June 26th, 2024

9 am – 4 pm

\$75

U of I Extension
535 S Randall Rd
St. Charles, IL



Optional \$20 kit for Improv Curve Piecing includes curated fabrics and must be ordered in advance. Maday recommends the optional kit of as it will encourage you to step out of your comfort zone. Order on her website here and she'll bring it to the workshop.



Walking Foot Quilting

Monday, July 22, 2024

9:30 am – 4 pm

\$65 for members

Congregational Church
of Christ
40W451 Foxmill Blvd
St. Charles, IL

Catherine Redford will have two workshops in July. Visit the website for more details and to sign up.

Yorkshire Buttons

Tuesday, July 23th, 2024

1 pm – 4 pm

\$35 Members + \$24 Kit*

* Kit includes 2 looms, threads, needle, stuffing and handout.

Congregational Church
of Christ
40W451 Foxmill Blvd
St. Charles, IL



UPCOMING PROGRAMS

All programs subject to change. More info, sign ups & dates on our website.

June 2024

Maday Delgado

July 2024

Catherine Redford

August 2024 (PM)

Ilene Bartos

August 2024 (AM)

Laura Hartrich

September 2024

Anna Maria



Our June speaker is Maday Delgado, a prolific art educator, published artist, Janome America Artisan and speaker based in the Midwest, committed to bringing innovation and artistry to the forefront of the work she creates. Her mission is to nurture artistic platforms across cultures and generations to foster creative work, while finding ways to minimize our environmental footprint.

She loves the art of collaging and storytelling with new and pre-loved textiles. She favors working with up-cycled materials and scraps as a way to honor the environment.

She was also a guest at the Quilt Show with Alex Anderson and Ricky Tims, which aired in April 2024.

Maday will present two lectures: *The Art of Curves* in the evening, and *The Memory of Stitches* in the morning.

Maday Delgado will have two workshops. Visit the website to sign up and for more details.

Remember to order in advance if you'd like a kit for the Chaos workshop. <https://www.sustainabletextiledesign.com/shop/prairie-star-guild-curved-piecing-kit-choose-local-pickup-at-checkout>

OUR WEB STORE IS OPEN



Place your order and select pick-up instead of shipping. Susan E. will pick up your order and contact you to make arrangements for delivery. We also have the white travel mugs available. Contact Susan E. if you'd like one. psqgstore.logofactoryusa.com



The Chaos of Perfection

June 25, 2024

6 pm - 9 pm

\$55 + \$20 Kit Fee = \$75 total

U of I Extension
535 S Randall Rd
St. Charles, IL



Improv Curve Piecing without templates

June 26, 2024

9 am - 4 pm

\$75

U of I Extension
535 S Randall Rd
St. Charles, IL

SIGN UP FOR THESE FUTURE WORKSHOPS

Our 2024 workshops are ready for sign-ups! Find what appeals to you and register ASAP. Sign up online today or stop by the table at a meeting.



Catherine Redford, July 2024



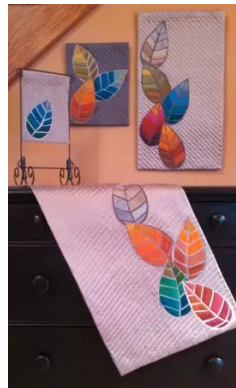
Catherine Redford, July 2024



Catherine Redford, July 2024



Catherine Redford, July 2024



Ilene Bartos, August 2024



Laura Hartrich, August 2024



Anna Maria, September 2024



Anna Maria, September 2024



Anna Maria, September 2024

The Northern Illinois Shop Hop is Coming!

June 1 - July 31, 2024

Get 15% off regular priced merchandise at each store on the day you get your passport stamped!

Pick up a passport at any participating shop or download from:

<https://www.quiltersquest.com/northern-illinois-shop-hop.htm>

Participating Shops

REGION 1

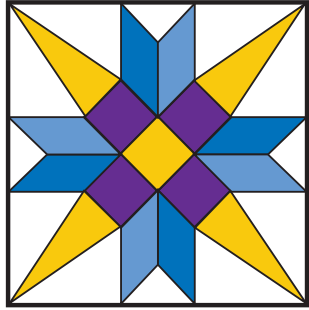
Basketcases
Country at Heart Quilt & Gift Shop
Leaf River Quilt Co.
Quilter's General Store
Quilters Haven
Sewing Concepts
Stitching on State
Sunshine Stitches
Twisted Stitch
Uniquely Yours Quilt Shop
Warman Cozy Quilt Shop
Yellow Creek Quilt Designs

REGION 2

A Different Box of Crayons
BERNINA of Naperville
Blue Willow Mercantile
Creative Sewing and Quilting
Harvest House Quilting and Glass
Pieceful Gathering
Quilter's Heaven
Quilters Quest
Sewing Concepts
Sewing Source, Inc.
Top Shelf Quilts



Gladiolus
**AUGUST
 BIRTH FLOWER**
 Strength
 Generosity
 Integrity



**2023-2024
 BOARD
 MEMBERS**

- President:**
Cindy Krelle
- Evening VP:**
Barb Tuman
- Daytime VP:**
Susan Egner
- Programs Co-VPs:**
Terri Martin &
Susie Shaddle
- Secretary:**
Ruthann Heidgerken
- Treasurer:**
Lori McMahan
- Membership:**
Aileen Vogel
- Newsletter:**
Melanie Murphy
- Education:**
Chris Schwarz & Foxy Beez
- Activities:** Nanci McAtee
- Media Co-Chairs:** Nancy
Krasinski & Sue Ann Reiner
- Tech support:** Chris
Macenski
- Bee Keeper:** Beth Koos
- Library:** Liz Fitzgerald
- Community Projects:**
Sheila Cisko
- Nominations:**
Sue Plaster
- Contracts 2024:**
Zohra Arastu



Aster
**SEPTEMBER
 BIRTH FLOWER**
 Wisdom
 Faith
 Valour

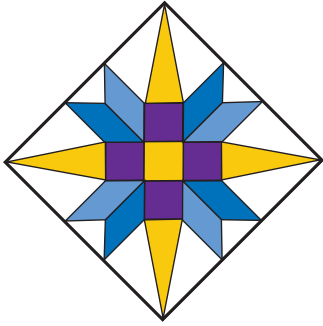
*Happy Birthday to all our members who have
 their special day in August and September.
 For privacy, I will no longer list the names here.*

YOU'RE INVITED!

Did you know our board meetings are
 open for any member to attend?
 The meetings are held every month
 we have a guild meeting,
 on the first Tuesday of the month.
 To attend, drop the President an email
 so she can send you the Zoom invitation.

2024 Quilt Show Chairs:
 Liz Fitzgerald & Yvonne Richter

JUNE/JULY 2024 ISSUE



Prairie Star Quilt Guild

P. O. Box 1460

St. Charles, IL 60174-1460

FIRST CLASS MAIL

Dated Material

ADVERTISING RATES

1/8 page \$10/issue (business card size)

1/4 page \$20/issue

1/2 page \$40/issue

Above rates apply to a single issue. A purchase of the same-size ad for a year (10 issues) earns a 10% discount. Ads accepted only for quilting or quilt-related subjects and must be prepaid. Refer to our website for details.

Deadline for ads (getting copy or camera-ready artwork to the Editor) is the first of the month in which you wish the ad to appear. Call or email the Editor if you have any questions.

SUBSCRIPTION INFORMATION

Prairie Star Press Subscription Only Rate: Non-members of PSQG wishing a subscription to the Prairie Star Press may subscribe for \$15/year (10 issues). Make check payable to PSQG and send to PSQG, P.O. Box 1460, St. Charles, IL 60174-1460. PSQG trades complimentary issues of the Prairie Star Press with other guilds upon request.