

# Prairie Star Press

Prairie Star Quilt Guild  
St. Charles, IL

Volume XLVI  
PSQG website: [psqg.org](http://psqg.org)

Issue #2  
August 2024

## AUGUST SUMMER HEAT

Sure, many of you are looking forward to cooler days after all the 90-degree temperatures we have had. On the plus side, we had a lot of days to finish all the quilts for the guild quilt show. You will be able to feast your eyes on over 200 gorgeous creations made by all our talented members. You will be so inspired that you will want to shop at our vendors booths and support the guild by getting great bargains at our fabric, books, patterns, magazines, and quilting things tables. Enjoy a little instant gratification at the boutique. If you still have cash left over, purchase tickets to win a basket of goodies. I have had a few peeks at some of them and they are packed full of great items. Finally, be sure to treat yourself to lunch at the café.

One thing to remember about the show is that this show cannot be a success without your help. There are many ways to donate your time before and after the show. Sign up at the meeting in August. Another important

thing about August is it is the last month to donate items for resale and the boutique. The ladies who volunteer to head the committees need to have time to price and sort all the great items. Thank you to all who have already donated.

There are two great workshops this month. Grab a friend and learn something new. If there is someone you would like as a speaker for 2025, suggest them to our contracts person, Zohra.

Show and tell is a good time to show your finished projects. It makes me happy to see all the great quilts everyone makes and shares with us. I also like to be inspired by what others create. I am usually only at the evening meeting and would love to see more show and tell quilts. I know you say there are fewer members at the evening than morning, but all of you are just as talented. I am taking a quilt off our guest bed to bring in August.

There will be a suggestion/idea box on the membership table starting in August. If you

### In this issue:

August summer heat .....	1
Updates & reminders ....	2-3
Upcoming programs .....	4-5
Ads .....	6
Birthdays & Board members .....	7

### Upcoming Guild Meetings:

August 26, 2024 at 7 pm  
 August 27, 2024 at 9:30 am

---

September 23, 2024 at 7 pm  
 September 24, 2024 at 9:30 am

All meetings at Congregational United Church of Christ unless otherwise noted.

*Congregational United  
Church of Christ  
40W451 Fox Mill Blvd.  
St. Charles, IL*

**Next Newsletter Deadline:**  
Thursday, September 5, 2024.  
Send info to Melanie Murphy at  
[melaniemakeups@gmail.com](mailto:melaniemakeups@gmail.com).

## page 1 continued

have a great idea you would like to share, or something you think would be fun to do, now is the time to tell us. The board works hard to keep the guild moving in the right direction, so let us know your thoughts.

Finally, the evening VP Barb and morning VP Susan along with Sue Ann are working on

something different for the November meeting. We will have a short business meeting followed by a Members Sale. Rent a table for \$10 at the evening or morning meeting and sell your sewing kits, notions, fabric etc. You price your items, sell at your own table, and the best part, you get the money. If you are

interested in this event, give Susan or Barb your \$10.00 and sign up. Members are encouraged to come to both meetings and shop twice. You may just find the item you have been looking for.

A thought to remember, THIS IS YOUR GUILD, BE INVOLVED.

—Barb Tuman Evening VP

---

## COMMUNITY PROJECTS

Thank you so much for all you do for our community and the guild's programs! Our program leaders are very appreciative of all the beautiful items that were made throughout the winter months and for your generous donations of fabric and sewing supplies.

Make sure to check out tutorials on the website or stop by the Community Projects tables at the meetings to ask questions, see project samples, or pick up a kit or two or three!

Thanks to Rita P. and the Quilts of Valor crews. The QOV National Sew-in Day is Feb. 1, 2025, and will be held at the St. Charles Moose Lodge. RSVP to Rita if you'd like to join the fun on that day! When you submit a QOV quilt, please attach a slip with your name and city to be added to the label. Recommended quilt sizes are on the PSQG website. Contact Rita if you would like to help with the quilting, have questions, or would like to stop by to help at the monthly events at the Moose Lodge in St. Charles on the 1st Tuesdays

or at the VFW in Montgomery on the 3rd Tuesdays.

NICU isolette covers, marble mazes, and fidget quilts are always in need! Kits are available or you can check out the PSQG Community Projects webpage for videos and size requirements to make them from your own stash. Contact Linda S.

Residential Hospice in Lisle is asking for quilts and comforters (please, no fleece) for their patients. Please do not pass along items that are stained or torn. Remember that these should be gently loved items! Pin a note to the item if it's been washed (unscented detergent, no softener is preferred) before putting it in a bag to drop off at the Community Project tables. They will also accept fidget quilts and marble mazes. Contact Sheila C.

Thank you to all the incredible supporters of our Quilts for Kids Program. We have lots of kits available and quilts in various stages for you to work on. Contact Sandi W. if you have questions.

Finished 3' x 6' mats for

the homeless are still being produced but Joyce J. will no longer be collecting plarn made from single-use plastic grocery bags. Thank you, Joyce! If you are interested in helping with this effort, please contact Sheila C.

Got scraps to fill a pet bed? We have pet bed kits for you! We are not collecting dog beds. Please drop off your completed dog beds at a shelter or foster near you.

Port pillows provide relief to chemotherapy patients. They are attached to the underside of a crossbody seatbelt and positioned over the patient's infusion port. The pillows are given to Phil's Friends, a local organization that supports those affected by cancer. Kits are available, although you can use fabric, stuffing, and hook and loop from your own stash. Contact Pam S. and Ann G.

Not sure who to contact? You can email Community Projects via email right on the PSQG website! Your message will be forwarded to the appropriate project leader.

# LIBRARY NEWS



The Library will not be available at the August meetings. Books you have

checked out should be returned at the September meeting.

## QUILT SHOW 2024

The August meetings are the time to sign up to volunteer at the show. Many hands make light work and we need YOU!

Please stop by the sign-up table at the meetings. There are many time slots available and various types of work. The quilt show is a great time to meet new friends who share your love of quilting.

If you are unable to help this year, please let Ann G. know so that she can make a note of it!

### Hostess Houses

We are in need of more volunteers to serve as Hostess Houses for quilt drop-off on Sunday, October 13th and transporting the quilts received to the DuPage County Fairgrounds the morning of Thursday, October 17th. We have a special need for hostess houses in the following geographic areas: Bartlett/Carol Stream, Elgin, Hampshire/Huntley and St. Charles/Batavia. Questions: Contact Mary Clemens.

### Books, etc.

Time to clean your sewing room! Donate your old books, magazines and patterns to the Quilt Show for us to sell and for others to enjoy.

We are limiting donations to newer books, which are books with copyrights from 2000 through 2023. We have found that the premium quilting, art

quilting, and foreign quilting magazines will sell.

We are limiting donations of magazines to include ones like *Quiltmania*, *Simply Moderne*, *Simply Vintage*, *Quilting Arts*, *Piecework*, and magazines from other countries like *Today's Quilter*, *Love Patchwork and Quilting*, *Quilter's Companion*, and *Make Modern*. We will accept any patterns, but they must be complete.

There are a few exceptions to these rules. Please ask if you have any questions.

We are accepting donations at all in-person Guild meetings through August. Bring donations to the Opportunity Quilt table or let us know and we will get them from your car. Any questions? Contact Liz F.

### Boutique

Make some items for the Instant Gratification Boutique. Think of items that you would love to get from a friend; that is what we are seeking. Any questions, feel free to contact me. Thanks in advance for your creativity, help, and contributions.

— Sheryl A, Boutique Chair.

### Challenge Quilts

Don't forget to turn in your Challenge quilts at the August or September meetings. For questions, check the website or contact Ruthann H. or Barb V.

### Fabric Treasures

We will be collecting Fabric Donations just inside the front door of the gym at the meetings. If you need assistance in unloading it from your car please let us know. Please sort your donation as directed in the instructions here: <https://psqg.org/wp-content/uploads/PSQG-Fabric-Resale.pdf>

August is the last month to drop off donations. We are collecting quilt shop quality cotton woven fabric, flannel precut bundles, and wool scraps for resale in the groupings listed on the donation instructions.

If you have any questions, concerns, or you would like to donate fabric but can not prep it yourself or are unable to bring it to a meeting, please contact Sue Ann R., Fabric Resale Chair.

### Quilty Items

August is the last month to drop off donations. Items should be gently used. Rulers, sewing supplies, and quilt-related gift items are all welcome. We will have open trunks at the meetings. Start gathering your trinkets to be sold at the quilt show. Contact Barb T and Heidi C.

## UPCOMING PROGRAMS

All programs subject to change. More info, sign ups & dates on our website.

### August 2024 (PM)

Ilene Bartos

### August 2024 (AM)

Laura Hartrich

### September 2024

Anna Maria



**Ilene Bartos**

Ilene is our evening speaker.



**Laura Hartrich**

Laura is our morning speaker.

#### Lecture

Borders, Sashing and More  
This lecture will be presented on the Monday, August 26th 7:00 pm meeting.

#### Lecture

Labels as a Love Letter  
This lecture will be presented at our Tuesday, August 27th 9:30 am meeting.

## OUR WEB STORE IS OPEN



Place your order and select pick-up instead of shipping. Susan E. will pick up your order and contact you to make arrangements for delivery. We also have the white travel mugs available. Contact Susan E. if you'd like one.

[psqgstore.logofactoryusa.com](http://psqgstore.logofactoryusa.com)

#### Silky Leaves

August 26th, 2024

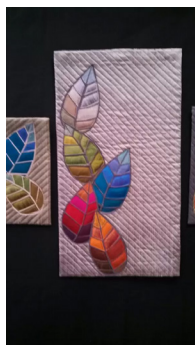
10 am – 4 pm

\$55 Members

\$60 Non-Members

*A kit is required. Please indicate the size you would like on the registration form and bring payment for the kit to the workshop.*

U of I Extension  
535 S Randall Rd  
St. Charles, IL



#### Label Level Up & Embroider Your Handwriting

August 27th, 2024

1 pm – 4 pm

\$30 Members

\$35 Non-Members

Congregational  
Church of Christ  
40W451 Foxmill Blvd  
St. Charles, IL 60175



# SEPTEMBER



## Anna Maria

Anna Maria will visit with us in September!

### Lectures

#### Blueprint Quilting

This lecture will be presented at the Monday, September 23rd 7:00 pm meeting.

A presentation that goes in depth on Anna Maria's unique composition styles, and her adventurous variations on those themes.

#### Patchwork Pathways

This lecture will be presented at the September 24th 9:30 am meeting.

An auto-biographical presentation of Anna Maria's quilts from the beginning.

### Feather Bed

September 23rd, 2024

9 am – 4 pm

*Workshop is Sold out.*

Congregational  
Church of Christ

40W451 Foxmill Blvd, St.  
Charles, IL 6017



### Applique Stories

September 24th, 2024

6 pm – 9 pm

*Workshop is Sold out.*

University of Illinois Ext.  
535 S Randall Rd  
St. Charles, IL



### Folk Flower Quilt

September 25th, 2024

9am – 4pm

\$80 Members

\$85 Non-Member

University of Illinois Ext.  
535 S Randall Rd  
St. Charles, IL

[Register for the Folk Flower workshop.](#)



# Dinner with Ilene Bartos

Sunday August 25th 5 - 6:30pm



922 Randall Road St. Charles

Between Rt. 64 and Rt. 38

Dear Quilters,

My name is Tracey Clement. I am a quilter and researcher from Australian Catholic University (ACU). I am looking for volunteers for a research study about Temperature Quilts.

The only criteria is the quilter must be over 18-years-old and have made at least one temperature quilt.

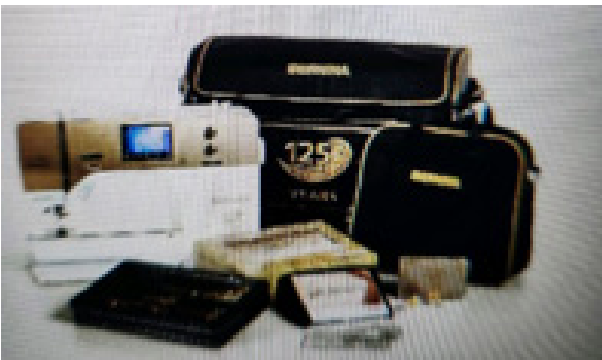
To participate, complete the following:

- An anonymous 5-minute survey. [https://acu.qualtrics.com/jfe/form/SV\\_2ahMz1blv2DofHg](https://acu.qualtrics.com/jfe/form/SV_2ahMz1blv2DofHg)
- Volunteer for an OPTIONAL online interview that will take approximately 20-30 minutes to complete.

For further information and a full description about the study, please see the [Participant Information Letter and Consent form](#).

This study has been approved by the ACU Human Research Ethics Committee, and the ethics number is: 2024-3764.

Please contact Dr Tracey Clement, Chief Investigator, via email if you have any questions about the research: [tracey.clement@acu.edu.au](mailto:tracey.clement@acu.edu.au)



## BERNINA 770QE 125TH ANNIVERSARY EDITION SEWING MACHINE FOR SALE

This is a gorgeous, like-new sewing machine. It does not have the embroidery module, but one can be added. All the extra items are included, and the quilt kit is intact.

This special anniversary machine comes with:

- Bernina 125th Anniversary X-Large Machine Suitcase
- Bernina 125th Anniversary Accessory Bag
- Golden Adjustable Ruler Foot #72 in Commemorative Tin
- Exclusive Golden Scissors Set with Rotary Cutter
- 125th Anniversary Quilt Kit featuring Amanda Murphy's Jubilee fabric Collection
- 125th Anniversary Ruler work Ruler Set of 3 rulers
- Also included is a hard copy Machine Manual

This machine is beautiful, with the true quilter in mind. It is really enjoyable to use. My price for all of the above is \$6,000, cashier's check only. Will negotiate.

I believe I have used this machine approximately 40 hours since purchasing it due to unexpected happenings in my life, which is why I have decided to find a new owner – and I am sure you will be delighted to own and use it as it is a joy, to say the least.

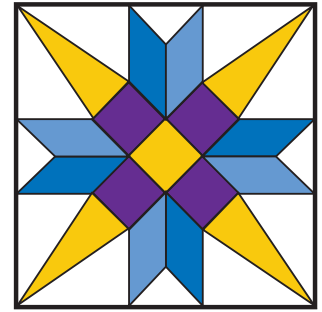
Contacted [Poppiseed7@comcast.net](mailto:Poppiseed7@comcast.net) with any questions.



*Aster*

**SEPTEMBER  
BIRTH FLOWER**

Wisdom  
Faith  
Valour



**2023-2024  
BOARD  
MEMBERS**

**President:**

Cindy Krelle

**Evening VP:**

Barb Tuman

**Daytime VP:**

Susan Egner

**Programs VP: OPEN**

**Secretary:**

Ruthann Heidgerken

**Treasurer:**

Lori McMahan

**Membership:**

Aileen Vogel

**Newsletter:**

Melanie Murphy

**Education:**

Chris Schwarz & Foxy Beez

**Activities:** Nanci McAtee

**Media Co-Chairs:** Nancy Krasinski & Sue Ann Reiner

**Tech support:** Chris

Macenski

**Bee Keeper:** Beth Koos

**Library:** Liz Fitzgerald

**Community Projects:**

Sheila Cisco

**Nominations:**

Sue Plaster

**Contracts 2024:**

Zohra Arastu

**2024 Quilt Show Chairs:**

Liz Fitzgerald & Yvonne Richter



*Marigold*

**OCTOBER  
BIRTH FLOWER**

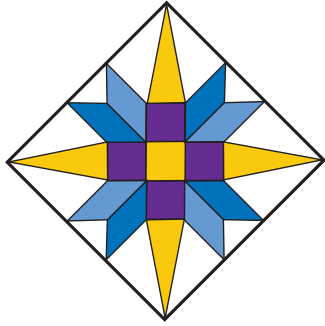
Passionate  
Creative  
Driven

*Happy Birthday to all our members who have their special day in September and October. For privacy, I will no longer list the names here.*

**YOU'RE INVITED!**

Did you know our board meetings are open for any member to attend? The meetings are held every month we have a guild meeting, on the first Tuesday of the month. To attend, drop the President an email so she can send you the Zoom invitation.

# AUGUST 2024 ISSUE



Prairie Star Quilt Guild

P. O. Box 1460

St. Charles, IL 60174-1460

FIRST CLASS MAIL

Dated Material

## ADVERTISING RATES

1/8 page      \$10/issue (business card size)

1/4 page      \$20/issue

1/2 page      \$40/issue

Above rates apply to a single issue. A purchase of the same-size ad for a year (10 issues) earns a 10% discount. Ads accepted only for quilting or quilt-related subjects and must be prepaid. Refer to our website for details.

Deadline for ads (getting copy or camera-ready artwork to the Editor) is the first of the month in which you wish the ad to appear. Call or email the Editor if you have any questions.

## SUBSCRIPTION INFORMATION

**Prairie Star Press Subscription Only Rate:** Non-members of PSQG wishing a subscription to the Prairie Star Press may subscribe for \$15/year (10 issues). Make check payable to PSQG and send to PSQG, P.O. Box 1460, St. Charles, IL 60174-1460. PSQG trades complimentary issues of the Prairie Star Press with other guilds upon request.