

# Prairie Star Press

Prairie Star Quilt Guild  
St. Charles, IL

Volume 46  
PSQG website: [psqg.org](http://psqg.org)

Issue #1  
June 2026

## HAPPY 45TH ANNIVERSARY

What a wonderful way to end our Quilt Guild year and celebrate our 45th anniversary. Kudos to Lori M and Barb T for the afternoon tea at Elburn Lions Park. I have heard nothing but praise.

Our new Guild year has started so if you did not attend the QuilTea be sure to pay your dues before the next meeting to avoid the rush at the membership table. With a new year starts new challenges and I am looking forward to being your new AM VP and I know I have big shoes to fill.

I do not make New Year's resolutions, but I try to carry out jobs month by month. This month is to get that quilt on the frame to quilt that was pieced months ago so it will be ready for the quilt show. Registration is open and the deadline is July 31st, less than 2 months away. Make a goal for yourself and see how far it

goes. Sign up for a workshop, go on a quilting retreat, go to a quilt show, or take an outing to a quilt museum. All sound exciting to me.

Summer is finally here, I think. I have thought that several times in the past months. My husband and I are just finishing putting the garden in. Hopefully, the plants will all catch up and we will have a bountiful yield. Hoping not to show my age I do remember not planting the garden until Memorial Day weekend to avoid any frost and come August I had a lot of vegetables to freeze and can. I find it hard to find quilting time in the summer, so I pray for rain. Two reasons, one I can hide away in my sewing room and create, and two so the garden will grow and bloom. The summer passes too quickly enjoy it.

Edith H. AM VP

### In this issue:

Thoughts from Edith .....	1
2026 Quilt Show.....	2-3
Upcoming Programs .....	4
Upcoming Workshops .....	5
What's all the buzz about bees? .....	6
Learn New Skills .....	6
Community Projects Update.....	6

### Upcoming Guild Meetings:

Mon 6/22/26, 2025 at 7 pm  
Tues 6/23/26 at 9:30 am

All meetings at Congregational United Church of Christ unless otherwise noted.

*Congregational United Church of Christ  
40W451 Fox Mill Blvd.  
St. Charles, IL*

### Next Newsletter Deadline:

Thursday, August 6, 2026.  
Send info to Diane Collins at [diane6304@me.com](mailto:diane6304@me.com).

# THE 2026 PSQG QUILT SHOW IS COMING!

Registration is now open for Judged quilts & all Display Projects at: <https://psqg.org/2026-quilt-show/quilt-show-registration/>.

Thank you for all your donations to our Boutique & Quilty Resale Departments. We will be collecting again at the June meeting as well as accepting Registration for the Youth Quilters & Challenge Quilts

Make sure you have your Quilt Week events on your calendar.

Sunday, October 11th—Hostess House Drop off

Monday, October 12th—Judging Day

Tuesday, October 13th—What did we forget?

Wednesday, October 14th—Pipe & Drape install & Supply drop off at the Fairground

Thursday, October 15th—Set up

Friday, October 16th—Show Open 9am - 5pm

Saturday, October 17th—Show Open 9am - 4pm, Take down & Clean up!



The 2026 Quilt Show Resale Collections will resume at the June Meeting following the guidelines below. The drop off point for your donations will be inside the meeting room to the right of the entrance. If you need assistance with your donation please do not hesitate to ask.

## Quilty Things!

Sewing & Quilting Items Such As:

Rulers, Thread, Embroidery Floss, Hoops, Needles, Pins, Buttons, Scissors, Rotary Cutters, Quilt Racks, Cutting Mats, Zippers, Trims, Lace, Ric-Rac Gadgets, Themed Gift Items, Organizers, Machines, Quilting Frames, Accuquilt Dies, Sewing Baskets  
Not limited to just these items!

Any Questions? Ask Barb Tuman or Heidi Clayton

## Books, Patterns & Magazines

Quilt Books: Publication date should be 2000 or later.  
All Quilt related novels are welcomed.

Magazines: Quiltfolk & Foreign publications only

Patterns: Quilting related only but no clothing patterns except for Quilt Jackets.

Any Questions? Contact Liz Fitzgerald

## Fabric Resale Collection

We are asking members to organize your donations but if you need help, just ask!

[Click here to see the full details.](#)

Any Questions? Contact Peggy Benzin

## Boutique

Think of things you would make for another crafter!

We'd like a nicely balanced selection of unique items. Some suggestions: Hand Bags, Tote Bags, Small Zippered Bags (Cosmetic or Pencil sized), Sewing case, table toppers, Table Runner, Placemats, Fabric Baskets.

If you do machine embroider would you be willing to add a little extra on basic items? If so, let us know!

Any Questions? Ask Deede Krage

# YOUTH QUILTERS

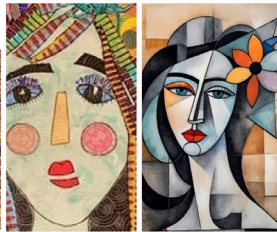
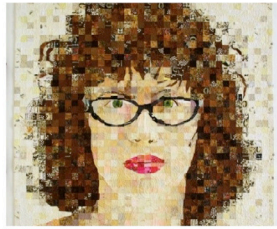
Our 2026 Quilt Show will have, once again, Youth Quilters!

Members of the Prairie Star Quilt Guild believe in supporting and promoting quilt makers of the next generation. The Youth Challenge blocks & Finished Quilts are made by youths, under the guidance of a guild member. Youth entrants should be between the ages of 4-18.

[Read All About it!](#)



## 2026 PRAIRIE STAR CHALLENGE QUILT



PSQG members are welcome to participate in this fun challenge. A \$5 fee and completion of the form will get you registered. At the show there will be a display of these quilts and visitors will be able to admire them and vote for their favorite. Winners will receive a small cash prize, ribbon, and bragging rights!

See [website](#) for rules and more details.



Hampton Inn & Suites North Aurora

Thursday, August 20th 9am  
to  
Sunday, August 23rd 5pm

Come & Go or Stay overnight!

## UPCOMING PROGRAMS AND WORKSHOPS

All programs subject to change. Additional details and registrations are on the [website](#).

**August:** Tina Craig  
*Workshop:* EPP Design Party  
Aug. 24 10a-4p \$54

**September:** Eileen Daniels  
*Workshop:* Here Is My Vintage  
Linen- Where Do I Start?  
Sep. 28, 1-4p \$25

**January:** *Virtual* Lorelei Kuecker and Julia McLeod

**February:** *Virtual* Kelly Ashton

**March:** Sarah Nishiura  
*Workshop:* Consider Curves  
March 23, 1-4p \$37

## UPCOMING PROGRAMS

### JUNE

#### CANDY GRISHAM

Candy of ICandy Quilts is a quilt artist, quilt teacher, author, maker of contemporary quilts & Modern Dresden patterns.

Modern, contemporary or traditional Dresden quilts and blocks can be pieced by machine in multiple fabric and color combinations to create stunning, one-of-a-kind quilts and fabric art.

These are great places to put your own stamp on your creative pieces.

**June 22 Lecture:** Creativity

**June 23 Lecture:** The Dresden Reimagined



### JULY

#### AMY STRUCKMEYER

While Amy values craft and tradition in design, she is energized by modern interpretations and creative remixes. Her recent work is rooted in an investigation of geometry and color.

**July 27**

**Lecture & Trunk Show:  
How to Break the Rules**

**July 28**

**Reframe Your Color Story**



## UPCOMING WORKSHOPS



### Candy Grisham Workshop Reimagined Dresden

In this workshop you will create your own unique small wall hanging from your vintage linens.

Wednesday, June 24 **NEW DATE!**

10am-4pm

University Of Illinois Extension Kane County  
535 S Randall Rd, St. Charles, IL 60174

**\$57**

Register [here](#)



### Amy Struckmeyer Workshop

#### Wild Geese FPP

In this class, participants will learn the basics of FPP to make more-than-basic blocks. Amy will share tips for precise foundation paper piecing and discuss ways to strategically use color and geometry to create sophisticated designs with these unique blocks.

Sunday, July 26

10am-3pm

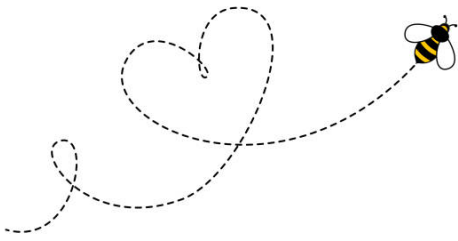
University Of Illinois Extension Kane County  
535 S Randall Rd, St. Charles, IL 60174

**\$47**

Register [here](#)



# WHAT'S ALL THE BUZZ ABOUT BEES?



A bee is a small group of people with a common interest in quilting (knitting, etc.). Some are specific to a technique (e.g. wool, embroidery, scrap) and

some have a more general theme. There are bees that sew together, socialize or shop. Generally, bees meet on a regular monthly basis, for example on the second Tuesday of each month. Some bees meet randomly, attending exhibits or shows together, and still others are more seasonal, like the bee that works on Bonnie Hunter mysteries each year. Often meetings are hosted in

members' homes on a rotating basis, but there are some that meet at a restaurant or in a room at a library. There are even bees that meet via Zoom! If there isn't an existing bee that suits you, we can work together on creating one.

If you'd like more information, please come to the Beekeeper table at the Guild meeting or email Kathy Secor.

---

## MEET THE CELEBRITIES AND LEARN NEW SKILLS

Are you interested in connecting with quilt instructors, discovering new techniques, and gathering with fellow guild members? Do you enjoy supporting others as they develop their quilting skills? The Programs VP and Contracts Chair play key roles in making these experiences possible for our guild. Each position focuses on a specific aspect, but together they form a highly effective team.

Alternatively, a Bee can also take on these responsibilities collectively. These positions are one-year commitments.

Both the Programs VP and Contracts Chair are essential to the guild's activities. Each position is required to attend the monthly Board Meeting, which takes place via Zoom, ensuring consistent communication and coordination. To streamline the work, we have developed

templates and instructions, as well as compiling a list of potential instructors for future events.

Those interested in learning more or preparing to take on these roles are encouraged to collaborate with Barb G. and Sheila C. throughout the new guild year. This mentorship will help you become fully prepared for the 2027-2028 guild calendar year.

---

## COMMUNITY PROJECTS UPDATE:

Kids Quilts & Hospice Quilts is off to an amazing start for the new fiscal year! Our volunteers group has been single handedly responsible for helping increase our volume of quilts! Between the Community Projects Bees and the group of ladies who help at my home every month, not only making kits, but helping me press fold and organize donations so we can get the kits made, our little village has been consistently

making about 60 Quilts for Shriner's Children's Hospital and Lurie Children's Hospital at Central DuPage. And for 3 months now, we have been providing quilts to Heartland Hospice in Northern Illinois. Heartland Hospice couldn't be more grateful and excited to provide these quilts to patients entering into Hospice. The feedback about the beauty and quality of the quilts has been mentioned repeatedly and the families of these Hospice

patients have been very appreciative. Keep up the great work and Thank you so much for the efforts of everyone. We will have new and fun kits at the June meetings and a gentle reminder to those of you who were making string blocks, don't forget to bring those to turn in at the June meetings! Have a wonderful start to your summer and we will see you all at the June and July meetings!

Join the Library and the Historical Society for an Old-Fashioned "Bed-Turning"

You're invited to bring a vintage quilt to the Big Rock Park District on Thursday evening, June 11, at 7:00 PM. The quilts will be spread on a "bed" (which is really a table approximating a bed). In turns, the owner of the top quilt will talk about what makes it special—a special occasion, fabric choice, the pattern, the creator, or whatever memories the quilt brings forth. The quilt is then folded and returned to its owner, giving the next person a chance to talk about their quilt.

The Common Threads Quilt Guild of Sugar Grove promoted this interesting idea. It's exciting to share your quilt that may have been tucked away in a linen closet.



### ATTENTION ALL ARTISTS! (KIDS ONLY)

Big Rock Township is hosting the America 250 **STUDENT ART CONTEST**.

Students in HBR 429, or residents of Big Rock Township, ages 3-18 are eligible. Create your work of art and submit your creation with an entry form by August 22.

Cash prizes will be awarded for first and second place entries in each category, as well as gift cards for honorable mention works. Winners will be exhibited at the Big Rock Plowing Match.

For more information, coloring pages and entry forms, visit the library or go to [bigrocktownship.com](http://bigrocktownship.com). You can also send questions to [katebuckson@bigrocktownship.com](mailto:katebuckson@bigrocktownship.com).



**SUPPORT LOCAL FARMERS:** According to an alarming statistic heard on NPR, the Midwest lost 30,000 farms between 2017 and 2024.

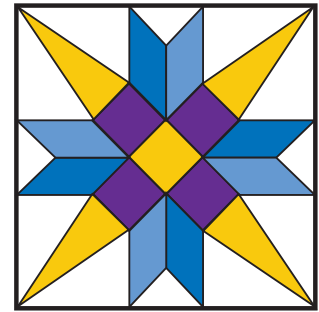
**Travel Sewing Repair**  
"We come to you!"



836 W Panorama Dr.  
Palatine, IL 60067

Phone: (224) 587-9477

[travelsewingrepair@gmail.com](mailto:travelsewingrepair@gmail.com) |  
[www.travelsewingrepair.com](http://www.travelsewingrepair.com)



## 2026-2027 BOARD MEMBERS

**President:** Cindy Krelle

**Evening Vice President:** Barb Tuman

**Daytime Vice President:** Edith Hubbard

**Programs Vice President:** Sheila Cisko

**Secretary:** Diana Rash

**Treasurer:** Lori McMahon

**Membership:** Aileen Vogel

**Newsletter:** Diane Collins

**Education:** Chris Schwarz

**Social Media:** Christina Conway

**Tech support:** Christine "Tine" Wyllie

**Bee Keeper:** Kathy Secor

**Library:** Liz Fitzgerald

**Community Projects:** Stefanie Combs

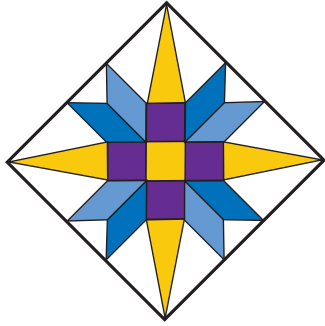
**Nominations:** Melissa O'Brien

**Contracts:** Barb Gillespie

**Activities:** Miranda Garcia

**2026 Quilt Show:** Sue Ann Reiner

# JUNE 2026 ISSUE



Prairie Star Quilt Guild

P. O. Box 1460

St. Charles, IL 60174-1460

FIRST CLASS MAIL

Dated Material

## ADVERTISING RATES

1/8 page \$10/issue (business card size)

1/4 page \$20/issue

1/2 page \$40/issue

Above rates apply to a single issue. A purchase of the same-size ad for a year (10 issues) earns a 10% discount. Ads accepted only for quilting or quilt-related subjects and must be prepaid. Refer to our website for details.

Deadline for ads (getting copy or camera-ready artwork to the Editor) is the first of the month in which you wish the ad to appear. Call or email the Editor if you have any questions.

## SUBSCRIPTION INFORMATION

**Prairie Star Press Subscription Only Rate:** Non-members of PSQG wishing a subscription to the Prairie Star Press may subscribe for \$15/year (10 issues). Make check payable to PSQG and send to PSQG, P.O. Box 1460, St. Charles, IL 60174-1460. PSQG trades complimentary issues of the Prairie Star Press with other guilds upon request.