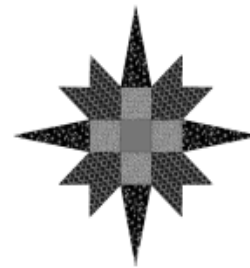


PRAIRIE STAR PRESS



PRAIRIE STAR QUILTERS GUILD
St. Charles, IL

PSQG Website: <http://www.psqg.org>

VOLUME XXXIII, ISSUE NO. 1
June 2012

From the Evening VP

Happy New Guild Year!

In June we are not only seeing the incoming Board taking over the reins, but starting a new membership year. **If you missed the membership renewal drive at the spring guild meetings, it's not too late – renew now!** We have another wonderful year in front of us. Caron Carlson has done a great job of lining up a varied set of speakers and programs that will culminate with the popular Bonnie Hunter – booked by the prior Contracts team over 2 years ago! – at our year end party, the May banquet. At the board transition meeting, I was energized by the passion and creative ideas floating around and crossing over from one board to the next. And, of course, we have our quilt show coming up in a few months featuring our Paducah award-winning raffle quilt! Let's leverage that to not only advertise raffle quilt ticket sales but to encourage attendance at the show. If every guild member invited just one paying guest that came to the show, that would result in about a thousand dollars of quilt show revenue.

Speaking of the May banquet, wasn't Laura Wasilowski a hoot, singing us the stories of her life? Laura and her colorful whimsical quilts are always so much fun that just seeing her already had me smiling and anticipating the giggles that were sure to follow. And they sure did!

June is bringing us the delightful and amazing award-winning quilter Millie Sorrels. You do NOT want to miss her program! I have heard her speak before and am eagerly looking forward to seeing her again. I've heard there are just a few spaces left in Millie's full day workshop machine quilting workshop if you'd like to still like to get in on this rare opportunity. *(cont'd)*

Included in this issue (if you're reading this online, click on a title to go to that article):

[From the Evening VP](#)

[Membership](#)

[Upcoming Programs](#)

- ❖ [June: Mildred Sorrels](#)
- ❖ [July: Indoor Picnic and "Quilts from the Garbage Can" workshop](#)
- ❖ [August: Mary Fisher on Organizing](#)
- ❖ [And more ...](#)
- ❖ [General notes about workshops](#)

[Summer Guild Picnic](#)

[Quilt Show 2012](#)

- ❖ [Quilt Show Update](#)
- ❖ [2012 Quilt Show Entry Form](#)
- ❖ [Got Scraps? We Need You!](#)
- ❖ [Challenge Quilts](#)

[More Guild information](#)

- ❖ [At the June Education Table](#)
- ❖ [Buzz from the Beehive](#)
- ❖ [Guild Members Birthdays](#)
- ❖ [2012-2013 Board](#)

[From outside the Guild](#)

- ❖ [English Paper Piecing Basics workshop](#)
- ❖ [Quilting with Machines: Classes available in Huron, OH](#)

PSQG June 2012

I am also looking forward to getting to know more of you in my role as the new Evening VP. I welcome your suggestions for the evening chapter meeting to keep the meeting as efficient and fun as possible.

Beth Hoffman

Membership

Dues for 2012-13 are due at this time.

They can be mailed to Barbara Stewart or paid at the June meeting. The renewal form can be found on the website

(http://psqg.org/?page_id=102) or at the meeting. A reminder that anyone wanting to submit a quilt for the quilt show must be a member in good standing thus all dues must be paid. New member fees are \$35 and renewing members will owe \$27 (a one-time change as we convert to our new membership year).

We look forward to joining with our quilting friends for another year of superb speakers, workshops, show and tell and **lots** of great conversation.

Membership Committttee

Upcoming Programs and workshops

June: Mildred Sorrels

Join us this month for [Mildred Sorrells](#). Mildred will enlighten us on "Quilting Past to Present" and there are still a couple spaces in each of the **workshops**. Please Call Caron 630 879-0000 to register.

July: Indoor Picnic and "Quilts from the Garbage Can" workshop

July is our "Indoor Picnic" and the activities committee has some fun (without the sun) planned. [editor's note: see the *Summer Guild Picnic* article for more!.]

This program year has started evolving into a "quilt with scraps" theme and **Kathy Jayko** will kick it off with her workshop "Quilts for the Garbage Can" This **workshop** is based on Bonnie Hunter's Crosses and Losses quilt and Kathy will share some tricks about one of her favorite types of quilting-SCRAPS and MORE SCRAPS! This will be held Tuesday July 24th at Prairie Shop Quilts in Batavia (Thanks Bonita!) from 1:00 to 4:00 p.m. and costs \$35 which will include the pattern. Please see the website for the supply list, or call Caron for a snail-mail copy.

August: Mary Fisher on Organizing

August is for Organizing and **Mary Fisher of Sort 'n Release LLC** will offer two lectures and a workshop I am so looking forward to! You will email some pics of your space featuring problem areas (eek!) along with a questionnaire to her, and she will project them and make recommendations on how to get your space in shape. (Not that any of us need it, lol!) This **workshop** will be held from 1:00 to 4:00 p.m. after the Tuesday meeting and costs \$35. Again, more info along with the questionnaire is on the website under the programs tab.

And more ...

In any given newsletter, I plan to share about 3 months' worth of upcoming programs. The website will feature a bit more and you can always call or email me. Remember, when you take a workshop, you just might meet your new best friend!

Caron Carlson
Program VP
(630) 879-0000
bigtimequilter@yahoo.com

General notes about workshops

The following notes apply to all workshops unless otherwise noted in the description.

- ❖ If the minimum number of PAID workshop participants is not reached 30 days prior to the workshop, the workshop may be cancelled.
- ❖ **Payment for workshops is due at sign-up.** Checks should be made payable to PSQG and can be handed in at the meeting.
- ❖ Cancellations for workshops (with full refunds) will be accepted up to 45 days before the workshop. After that, a refund will only be given if you find someone to take your spot in the workshop.
- ❖ Supply lists for each workshop will be posted on the Web site as soon as we receive them from the teacher. Web links for each teacher are also listed if the teachers have websites.
- ❖ For all-day workshops or Tuesday afternoon workshops, box lunches can be ordered in the morning for \$11.
- ❖ Unless otherwise noted, all lectures/trunk shows and workshops will be held at Bethlehem Lutheran Church, 1145 North Fifth Avenue, St. Charles, IL 60174.

Newsletter Info

Do you have any quilt-related news to share with the guild?

Email me and I'll add it to the next newsletter (space permitting).

Deadline for the next newsletter: July 5, 2012, 6:00 p.m.

Becky Hall, Editor
beckyh@rchconsulting.com

Summer Guild Picnic

The Party Continues at our Annual Indoor Picnic!

Please join us for an evening of food and fun at 6:00 p.m. on Monday, July 23 at Fox Valley Presbyterian Church in Geneva (227 East Side Drive, east of Kirk Rd. and just north of Rt. 38). This is what we call an "organized potluck," so here is the plan:

- If your last name begins with **A through K**, please bring a **main dish salad**.
- If your last name begins with **L through Z**, please bring a **dessert**.

We will provide unsweetened iced tea, sweetened lemonade, and cups (BYO if you wish), but we ask that you please bring your own plate and utensils. You can arrive any time after 6:00 p.m. and we will start to eat around 6:30 p.m.

We will have a dual focus this year for our "program." As always we want to celebrate the next generation of quilter/sewers, so if you know a young quilter, please invite him/her to come to the picnic and bring some show and tell items. Our second focus will be a show and tell of **My First Quilt**. Dig out your first (or second) project as you began your quilting journey and be prepared to show it and tell us the story behind the quilt. Finished or not, well-loved or untouched for 20 years, we want to see them!

There will also be some game fun and a few prizes, so please plan to join the party!

Diane Moore and Chris Schwarz

Quilt Show 2012

Our quilt show is October 12 and 13, 2012, at the DuPage County Fairgrounds.

Quilt Show Update

First of all, we would like to thank the volunteers who showed up on May 14th to sew rod pockets and hems on the new black drapes for the Quilt Show. Everyone showed up ready to work and with some pre-cutting and Joanne Sattler's serger, we made 96 drapes in about 2 1/2 hours!! Awesome! Thanks again to all who pitched in!

Now that we have beautiful drapes to showcase all of your talents, we hope that you are working on quilts to be displayed in the Quilt Show - and don't forget to consider having your quilt judged - it's a great opportunity to get some professional feedback, and who knows? You may take home a ribbon!

We could also use some help with spreading the word about the Quilt Show. If you know of someone who participates in a senior center, lives in senior housing or belongs to a group that likes to take outings to special events - suggest our Quilt Show! We will be glad to forward publicity materials and bookmarks - or give them to you to deliver - all you need to do is let Chris Buss, publicity chair, know and she will help you out. Chris' email is cmbanywhere@gmail.com. Of course you can always give the information to us (Lynn & Jan) and we'll see that your group gets the materials.

Now that we have an award-winning raffle quilt, don't forget to pick up some tickets for yourself or to sell to others - we all need to help sell tickets for our beautiful quilt!!

Beginning with the June guild meetings, you will have the opportunity to sign up for volunteering at the Show - be thinking about when and what type of help you can provide.

The next meeting of the Quilt Show committee is scheduled for Thursday, June 21st at the DuPage County Fairgrounds at 10:00 a.m.

It's getting closer - let's keep the momentum going! Don't forget your quilt-shop quality scraps, books and magazines, and items for the boutique!

*Lynn Murphy
Jan Sharpless*

2012 Quilt Show Entry Form

The new entry form can be found on the PSQG website under Guild Show - Members Section (http://psqg.org/?page_id=261). It is not too early to be thinking about which quilts you want to put into the show.

If your quilt is larger than 96" by 96" please put your 4" wide quilt sleeve, used for hanging your quilt, on the back at most 94" from the bottom of your quilt. You can buy a kit or make this sleeve. (Pre-made sleeves are also available for purchase at Prairie Shop Quilts.) We will fold over the top portion of the quilt.

Directions for making a sleeve for your quilt are on our website under Show-member information. (http://psqg.org/?page_id=261)

I will have a sample of a sleeve and how to make it at the June meeting.

Remember, you can turn in a picture of your quilt top on your entry form with the size even if it is not quilted yet. **The deadline for entry forms to be turned in is August 1st!**

Call me, Ginny, with questions.

*Ginny Wright
630-513-1418*

Got Scraps? We Need Yours!

As you're finishing up all your quilts for our October show, we bet you're probably generating scraps. Wouldn't it feel good to get those scraps out of your sewing space so you

can have more room to work? If so, bring your scraps to the summer guild meetings (even the picnic), or email one of us. You can also drop scraps off at our homes, or (if you ask nicely), we might even come and pick them up. Stay tuned for a special announcement in August regarding scraps at the Quilt Show (remember, Bonnie Hunter, the queen of scrap quilting will be doing three--that's right, **three**--full-day workshops for us in May 2013).

The PSQG 2012 Scraps Committee:

Liz Fitzgerald - elizabethfitzgerald1@gmail.com

Yvonne Richter - yrichter@juno.com

Judy Scheppach - jmscheppach@comcast.net

Susan Strasser, strasser23@gmail.com

Challenge Quilts

Ladies, you may hand in your Challenge Quilts at the guild meetings where there will be a large basket. Please make sure your quilt has the identification slip from the bottom of the Challenge Quilt instructions. Your quilt should have a label sewn to the back and the paper instructions pinned to the back. Your entry should be in a pillow case or fabric bag which has your name on it. **Deadline for entries is August 31.** After that time only a bribe of **CHOCOLATE** will allow you to hand in your quilt! Seriously, in order to plan for display, it is essential you do your best to get me your quilt on time. I hope everyone is enjoying making theirs (or at least thinking about it). Call or e-mail me with questions.

Georgia Rodney
g.rodney@att.net

More Guild information

At the June Education Table

Are you chain piecing? Get a nifty trick for cutting them apart and a great way to make 8 half square triangles all at once at the education table at June's meeting.

Yvonne Richter

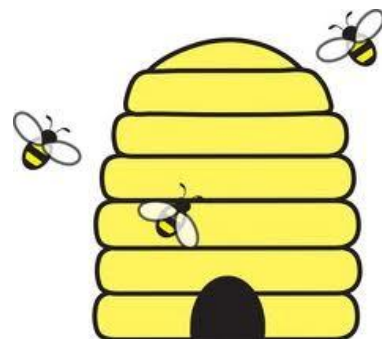
Buzz from the Beehive

It is a new PSQG year and I am the new Beekeeper. From the information given me we have about 35 Bee groups, with most information filled in but some have no name and I know of a few groups whose names are not listed so one of the things I would like to do is to update these groups. In June I will have a sheet asking for the chairman of each Bee to either initial your Bee as still being in existence and to complete any missing information or add your Bee name to the list. If you do not 'sign in' I will be calling or emailing some of you. If your Bee wants more members, also note that.

I also had an idea to start a Quilt of Valor Bee where people could share patterns, fabric, and work on blocks for a quilt top, sometimes sewing on machines. Please sign up if interested. We would then turn over the quilt top to Rita Pennington and her group. A list will be available to sign for those who want to join an existing Bee or form a new Bee. Please fill out all the information. You can also email me if interested and make sure to include your name, phone number, e-mail address, the town you live in, and whether you want a daytime or evening Bee.

So, welcome all to the 2012-2013 year of PSQG and keep quilting!

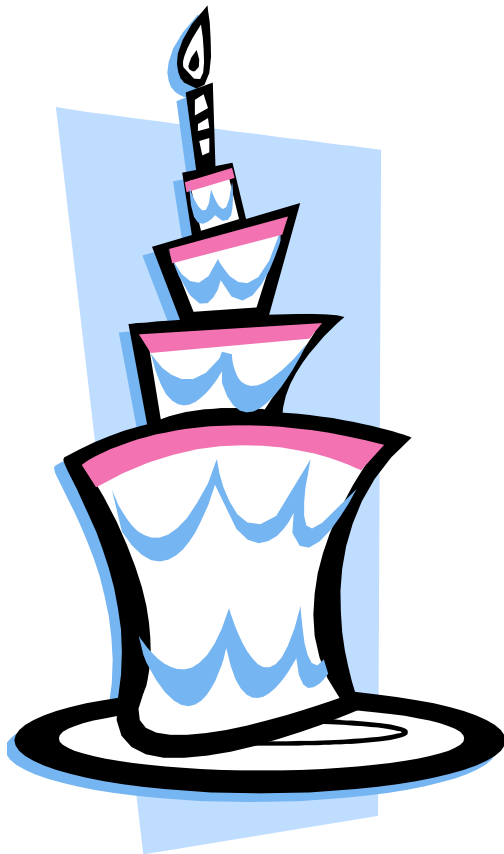
Ginny Wright – PSQG Beekeeper
630 513-1418
ginny.wright@comcast.net



Guild Members Birthdays in June

Diane Carney	June 28
Karen Dowd	June 30
Kay Mary Frank	June 7
Lolly Golden	June 5
Violet Klebert	June 21
Joyce Schultz	June 7
Susan Strasser	June 23
Barbara Tuman	June 27
Patricia Walsh	June 3
Ginny Wright	June 28

Barb Stewart, Membership



From outside the Guild

English Paper Piecing Basics workshop

Offered by: DeKalb County Quilters Guild

Workshop: Spin Out!!

Teacher: Chris Moline

Date/Time: June 30, 2012, 10:00 a.m. to 1:00 p.m.

Location: American National Bank, corner of Highway 23 and Bethany, in Sycamore.

Description: English Paper Piecing is an over 300 year old hand piecing technique that is the hallmark for obtaining a precision look with eye-popping results. In this class you will learn the basics of English Paper Piecing with Hexagons, Triangles and Diamonds in three sizes along with tips and tricks to get you started. It's like popcorn – one is just never enough and you can do it anywhere! Finished project is roughly 30 inches square.

Come prepared for fun!!!

Fee: \$50 for non-members.

Note: There is an optional book, *Piecing It All Together* by JoAnne Louis and Chris Moline, for the larger quilt, but it is not required for the workshop project. A \$5 kit of Paper Pieces will be available at the workshop. Contact vpprogs@dcqg.org to sign up and receive the supply list.

**Quilting with Machines:
Classes available in Huron, OH**

Join us for our 6th year of offering machine quilting classes in a beautiful relaxing setting.

We have teachers who are some of the best in the business. Quilting with Machines is not just about longarm quilting. Along with longarm classes, we offer classes for midarm and domestic machine quilting with wonderful

national teachers as well. We also offer several beautiful piecing classes for those of you who are not quite ready to make the jump to machine quilting.

Our venue also offers a quilt show that is just for machine quilters and a vendor mall with lots of tools, patterns, and gadgets for quilting as well as some very interesting fabrics.

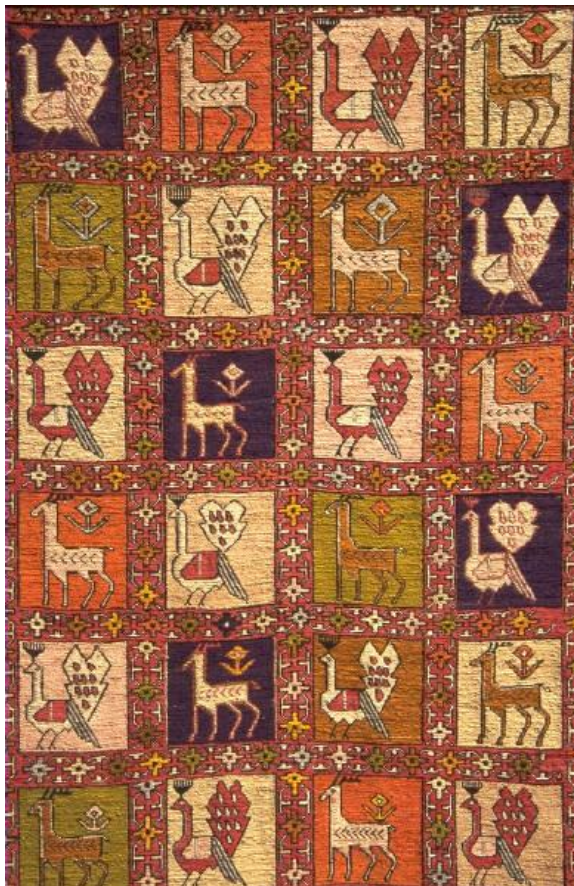
Class registration is open and the small hands on-classes fill quickly, early registration is encouraged.

Quilting with Machines website is www.quiltingwithmachines.com

QwM 2012:

September 19-22, Classes, Classes, Classes!
September 20 – 22 Quilt Show and Vendor Mall

Sawmill Creek Resort and Convention Center in Huron Ohio



2012-2013 Board

Executive Board

President	Bonita Deering
Program VP	Caron Carlson
Evening VP	Beth Hoffman
Daytime VP	Teresa Kasch
Secretary	Joyce Jaksa
Treasurer	Jan Sharpless

Committee Chairpersons

*indicates co-chairs

Membership	Barb Burdette* Barb Stewart* Elvira Illig *
Newsletter	Becky Hall
Education Coordinator	Yvonne Richter
Public Relations	Christine Buss
Nominations	Joyce Jaksa
Activities	Chris Schwarz* Diane Moore*
Bee Keeper	Ginny Wright
Library	Janet Miller
Community Projects	Nancy Aho* Joyce Keane*
Contracts 2013-2014	Sharron Evans
Contracts 2014-2015	Barb Vlack
Quilt Show Chair 2012	Lynn Murphy
Quilt Show Co-Chair	Jan Sharpless

Calendar of Events

Check the body of the newsletter for more details. All events take place at Bethlehem Lutheran Church in St. Charles unless otherwise noted.

June Meetings

Board Meeting: Tues. June 5, 7:00 p.m.

Evening Guild: Mon. June 25, 7:00 p.m.

Morning Guild: Tues. June 26, 9:30 a.m.

July Meetings

Board Meeting: Tues. July 3, 7:00 p.m.

Combined Guild: Mon. July 23, 6:00 p.m.
Fox Valley Presbyterian Church in Geneva

ADVERTISING RATES

1/8 page \$10/issue (business card size)

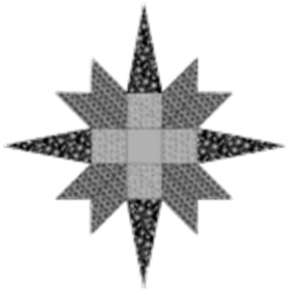
1/4 page \$20/issue

1/2 page \$40/issue

Above rates apply to a single issue. A purchase of the same-size ad for a year (11 issues) earns a 10% discount. Ads accepted only for quilting or quilt-related subjects and must be prepaid. Deadline for ads (getting copy or camera-ready artwork to the Editor) is the first of the month in which you wish the ad to appear. Call or email the Editor if you have any questions.

SUBSCRIPTION INFORMATION

Prairie Star Press Subscription Only Rate:
Non-members of PSQG wishing a subscription to the **Prairie Star Press** may subscribe for \$15/year (11 issues). Make check payable to PSQG and send to PSQG, P.O. Box 1460, St. Charles, IL 60174-1460. PSQG trades complimentary issues of the **Prairie Star Press** with other guilds upon request.



Prairie Star Quilters Guild
P. O. Box 1460
St. Charles, IL 60174-1460

FIRST CLASS MAIL

Dated Material