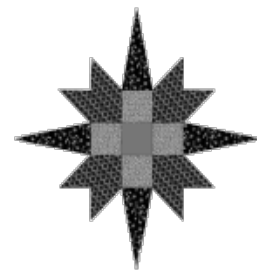


PRAIRIE STAR PRESS



PRAIRIE STAR QUILTERS GUILD
St. Charles, IL

PSQG Website: <http://www.psqg.org>

VOLUME XXXIII, ISSUE NO. 11
May 2013

From the President

I have a nest of baby birds perched on my front porch light and the colors of tulips and the fresh smell of cut grass must mean that Spring has FINALLY sprung and summer is just around the corner. Yahoo! Now I'm not a gardener though I know so many of you are, so you won't find me digging around in my flower beds anytime soon but you will find me up in my sewing room with the windows wide open and sewing away. That is...when I'm not enjoying all the guild activities we have to keep us busy all summer long.

I can't wait to dress up a little, enjoy a wonderful meal with my fellow guild members and see what I'm sure will be a fantastic presentation by Bonnie Hunter at our annual Banquet on May 20 at Villa Olivia. Then at our June guild meeting, we welcome quilter extraordinaire Anita Solomon who will tell us all about Making it Simpler (and who doesn't want to know how to do that) but wait...there's more...join us on July 22 for our annual picnic which this year will include the opportunity to take a workshop before the picnic. Join designer and instructor Kim Fauth to learn about the ABCD's of quilting from 9 am until 3:30 pm.

Wow! That's a lot of stuff AND what helps to make all of these events possible are the membership dues we pay each year. Where else can you see the quality of speakers we have at PSQG for just \$35 a year. I'll tell you...nowhere else. So...make sure to get your dues in soon (the wonderful ladies at the Membership table will be happy to take your form and payment at the Banquet).

Enjoy the spring and see you all summer long!

Bonita Deering
President

Included in this issue (if you're reading this online, click on a title to go to that article):

From the President	1
Upcoming Programs and workshops	2
❖ May: Bonnie Hunter	2
PSQG Banquet May 20th	2
The 2013-2014 program year!	2
Raffle Quilt Workshop Set!	4
Membership	
❖ Thank you	4
❖ Membership Dues are Due	4
Annual Picnic and workshop	5
News from the Beehive	5
Upcoming Member Birthdays	6
From outside the Guild	
❖ Quilts of Valor	7
❖ Workshops with Mary Loe Weidman	7
Calendar of Events	8

Upcoming Programs and workshops

May: Bonnie Hunter

For the Bonnie-files of the world, the wait is over!! **Bonnie Hunter** of [Quiltville](#) fame will be our May Banquet Speaker.

If you have any questions about the workshops with Bonnie Hunter, please visit the website first (click [here](#)) or contact Caron Carlson 630 879-0000 or bigtimequilter@yahoo.com. Be sure to check out the "General Checklist" at the top of that same page in addition to supply lists. See you soon!

Caron Carlson
Program VP
(630) 879-0000
bigtimequilter@yahoo.com

PSQG Banquet May 20th

The banquet will be on Monday, May 20 at Villa Olivia, 1401 W. Lake St. (Rt. 20) in Bartlett. Doors open at 6:00 p.m. with dinner at 7:00 p.m. It will be a wonderful dinner and evening with the wonderful and entertaining scrappy quilter Bonnie Hunter. We are seating tables of eight and you can find your table number when you sign in.

We are continuing the tradition started last year of bringing food items for the less fortunate in our community. Please bring a non-perishable food item to the banquet to



donate to a local food pantry. If you bring 5 or more items, you will be given an extra ticket for the door prize drawings. Last year we were able to donate over 350 food items, and we would love to top that this year!

If you have dietary restrictions and have not notified us, please do so as soon as possible. The staff at Villa Olivia will work to accommodate them. Please join us for a lovely dinner for our May meeting.

Diane Moore and Chris Schwarz
(630) 483-0383
chrisgbh23@yahoo.com

The 2013-2014 program year!

A big thanks to Caron on presenting a great year of programs! And now the grand finale – BONNIE HUNTER!!!! We all know we will have a ball with her and our piles of scraps. Did you know the simple truth about scraps though? They self-propagate. Yes, it's true --- we never seem to run out of them ☺.

Now I hope everyone enjoyed my BIG REVEAL at last month's meeting. Here is a quick recap for you:

- ❖ **June: Anita Grossman Solomon** – her lecture on "Making it Simpler" Techniques will teach even us old dogs new tricks. Her classes include Mitered Log Cabin and "Xcentric". Hurry and sign up for these at banquet – only a few spots remain!
- ❖ **July:** Our picnic – with an added opportunity for a class in "ABCD Quilting" blocks.
- ❖ **August: Catherine Redford** - Featuring two different lectures for us – Monday will be "Lessons learned While Quilting" and Tuesday we'll hear about "Safari through African Folklore Embroidery." Her classes will cover Folklore Embroidery and Modern Wool Applique.

- ❖ **September: Jean Biddick** – showing us Architectural Influences in quilting and teaching us Mosaic Piecing and Feathered Stars.
- ❖ **October: Sally Davis** with her Kaffe quilts to inspire us to create. Her classes will include Blue Potpourri (and no, you don't need to make your quilt blue) and Plaids Squared.
- ❖ **November: UFO night.** We all know you have them, now bring them out for our contests. Some categories include: oldest UFO, largest UFO, best story behind your UFO... we'll have a blast!
- ❖ **December:** Happy Holidays everyone – no meeting.
- ❖ **January: Ms. Priscilla Kibbee** will have us walking the runway with her wearable works of art from the many Bernina Fashion shows she's been a participant in. Her classes will include Seminole piecing and a wearable art vest. P.S. – if you are in to molas – this is a must-not-miss meeting for you!
- ❖ **February:** School is in session! And your fellow guild members will be sharing many tips, tricks and techniques that can help us all. From hand quilting to machine work, come join us for a fun filled and *active* meeting!
- ❖ **March: Diane Rode Schneck** will inspire us with traditional, humorous and art quilts. A gal after my own heart trying bits of everything. And speaking of bits, my comment above regarding scraps is so VERY TRUE. But Diane will take those scraps one step further with her class on "Scraps, Crumbs, Strings and Things." Her second class is perfect for when you have the itch to sew but don't want to commit to a whole "project." Her "End of the Day Quilts" class will fill that urge for you.
- ❖ **April:** Besides our annual business meeting we will be hosting one of the biggest names in modern quilting, **Ms. Philippa Naylor**. You've seen her quilt

on the American Quilt Museums exterior entrance, now come see her and hear her lovely British accent. Her lecture is entitled "10,000 Miles" and traces her quilt studies from Saudi Arabia to England and to the U.S. Her three days worth of classes will be a unique opportunity to learn from one of the best! Starting with an all-day class in machine quilting on Monday we will all welcome the tips and techniques she will share. Tuesday is all about precision piecing – so whether you are working on a Dear Jane Quilt or one of Jo Morton's' itsy pieced blocks – or any blocks for that matter – this class is for you! And since Philippa is so talented we are going to keep her an extra day. Wednesday she will be teaching us Finishing Touches for our quilts. So if you ever wanted to kick your quilts up a notch or add that something extra (perhaps double piping in the binding?) – this class will clearly move your quilts into the ribbon winning categories. NOTE: Her classes fill fast so you will want to sign up early!

- ❖ **May: Ami Simms.** Besides being named as Quilt Teacher of the year (2005) by Professional Quilter Magazine, she is an author of 9 books, has appeared on many show as guest with Alex Anderson and Kaye Wood. As founder and executor director of the Alzheimer Art Quilt Initiative she has raised just over \$900,000 for Alzheimer's Research! (Go to: <http://www.alzquilts.org> to see how you can help sprint to the million dollar mark.) Ami will be our coach as we learn "How Not to Make a Prize Winning Quilt." More details will be coming as there is so much more to know about Ami!

*Sharron Evans
Program VP 2013-2014*

Newsletter Info

Deadline for the next newsletter: June 6, 2013, 6:00 p.m.

Becky Hall, Editor
beckyh@rchconsulting.com

Raffle Quilt Workshop Set!

If you are interested in helping with the raffle quilt, we will be holding a workshop at Prairie Shop Quilts on May 30th, Thursday from 10 until ????. Because pieces will be precut, we hope to get the lion's share of the piecing done. Participants should have a reasonable comfort level with paper piecing, and you will get a chance to see what a Judy Niemeyer pattern is all about! If you are interested in joining us, contact me as space is limited!

Caron Carlson
(630) 879-0000 or bigtimequilter@yahoo.com

Membership

Thank you

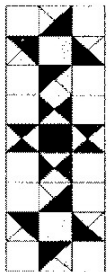
To all Prairie Star Quilt guild members the membership committee offers a huge debt of gratitude for your selfless donations of time, funds and talents in all areas of our quilting world.

Your continuing support allows the guild to offer world, national and local speakers/teachers, a phenomenal quilt show plus many, many other opportunities at no cost or minimal cost to members.

You are a special group of women and men and we THANK YOU!

Membership Dues are Due by May 31, 2013

It's hard to believe another fabulous year has flown by and it's time to join the guild for an additional spectacular year. Dues are a mere \$35 for all members with an additional \$15 for those members desiring the newsletter by mail. You may download the current



Expressions in Threads

JANOME of LeClaire
Fine Quilting Fabrics & Supplies
JANOME Sewing Machines

Fabriganza Returns

Save the Date!

Friday, July 19 & Saturday July 20

It's so big we have rented another building!

208 South Cody Road
LeClaire, Iowa 52753
www.expressionsinthreads.com
(563) 289-1447

Store Hours
Mon.-Fri: 10-5
Sat: 10-4
Sun: Closed

membership form from the website and bring it filled out with your payment to the banquet or mail it to Joyce Jakska using the address on the form. Please be prompt with your dues payment to avoid problems at future meetings.

Our guild welcomes new and experienced quilters/crafters. Do think of inviting your family, co-workers, friends, and neighbors when rejoining for another year of 11 inspirational, informative, and exciting meetings with your favorite quilting people.

2012-2013 Membership committee:
 Barb Burdette
 Elvira Illig
 Barb Stewart

Annual Picnic and workshop

Save the Date: Monday, July 22, for our annual indoor pot-luck picnic (and even a workshop)!

This annual celebrations of good salads and desserts will be held this year at the Congregational United Church of Christ, St. Charles, Illinois, on Monday, July 22nd, beginning at 6:00 p.m. The church is located at 40W451 Fox Mill Blvd St Charles, IL 60175 just off LaFox Road, approximately half way between Routes 38 and 64. As usual, you're asked to bring your own table service (plate and silverware) and a dish to pass. If your last name begins with A through M, please bring a salad. Those with last names beginning with N through Z will be responsible for yummy desserts (don't forget the chocolate).

JC In-Home Repair

Joe Gasparich
 Factory Technician



Sewing Machine Service
All Makes and Models

Certified in All
 Makes & Models

Phone: 708-369-0464
 inhomesewingrepair@gmail.com
 www.inhomesewingrepair.com

To add to the fun this year, the picnic will be preceded by a full-day workshop, ABCD quilting, in the very same location.

In this workshop, you'll spend the first three hours making 32 (that's right, 32!) blocks. In the second half, you'll assemble these blocks into your own quilt (and have it available for a "Show and Tell" session that night at our PSQG picnic). There are a few spots left in the workshop; you can sign up at the May banquet or at the June meeting (if there are any spots left by then).

The workshop will begin at 9:00 a.m. and run until 3:00 p.m., but those who don't want to run home between the workshop and the picnic can bring their food in the morning and store it in the church's lovely kitchen. Then they can simply continue to sew until the picnic begins. We're assured that many in the workshop will have finished projects to display as entertainment for the picnic!

Questions? Contact either Susan (strasser23@gmail.com) or Mary (maryk_stewart@hotmail.com).

Susan Strasser and Mary Stewart



News from the Beehive

Spring is here finally! With spring comes a new Bee, the Hand Quilting Bee. We met on May 2nd and will continue meeting on the first Thursday of the month, except for July which we will skip (July 4th!) at Sew Generously in St. Charles. There are still openings so if you are interested and/or have a quilt to finish please join us by contacting me. We are looking for a good name which doesn't imply that we are 'old', but just quilt using an 'old' method!

The Scrap Bees are getting ready for Bonnie Hunter's workshops and/or working on their own projects. A new name for Scraps III: "Scrap 'n Sisters". Scraps I: "Scrap Hunters"

PSQG May 2013

and Scraps II: "2 B Scrappy" rounds out our three Scrappy Bees.

Other openings can be found in the 4th Thursday Appliqué Bee at Prairie Shop (see me), and the Sunday Dear Jane Bee (see Sharron Evans). There is an embellishment/beading Bee in the works as well as a daytime art Bee also. If you are new and just want to get together with other PSQG quilters, we can start a new group for you.

Remember, being a member of a Bee is a great way to meet new friends, exchange ideas, fabrics, attend quilt shows, shop hops, our banquet, retreats or do charity work...a basket for the next quilt show, or make a Quilt of Valor Quilt or blocks...or just finish one of your UFO projects.

Our next show will be here before you know it so join another Bee and keep quilting!

Ginny Wright, Beekeeper
630-513-1418 or 630-715-2266 (cell)
ginny.wright@comcast.net

Upcoming Member Birthdays

Barbara Gillespie	May 16
Caron Carlson	May 18
Gail Maggio	May 18
Lorraine Malecki	May 18
Janet Sitter	May 20
Barbara Burdette	May 22
Mary Zenger	May 22
Susan Wing	May 27
Mary Gehrke	May 28
Debbie Trant	May 29
Dorothy Andrews	May 30
Patty Harrer	June 3
Kathleen Pool	June 3
Pat Walsh	June 3
Pat Schnell	June 4
Lolly Golden	June 5
Lee Ann Dhooghe	June 7
Kay Frank	June 7
Joyce Schultz	June 7
Cathy Halfpenny	June 9
Elizabeth Coleman	June 12
Kathleen Jayko	June 14

Submitted by Barb Stewart, Membership

Thinking About A Quilt Retreat?

Check out Illinois Amish Area Quilt Retreat

ARCOLA FLOWER PATCH B&B

225 E. Jefferson
Arcola, IL 61910
217.268.4876

www.arcoliflowerpatch.com

See: <http://www.arcoliflowerpatch.com/Package-19-Quilt-Retreats>



From outside the Guild

Quilts of Valor

Many of you are familiar with Quilts of Valor – we make quilts that are given to troops coming home from deployment. Prairie Star Quilt Guild has been very supportive, and here's a new way to help.

We received many strips end in every color! They are 2 1/2" (some smaller) strips. I'll bring them to guild (or if you want to start sooner, meet you at Prairie Shop Quilt Store, Batavia). You can pick any pattern you wish and pick any color combination and make up a quilt for a veteran (the minimum size is 55" x 65").

Also, we are collecting the UPC codes from any Hobbs Batting product. They have a charity batting program we would like to take advantage of. You can give the UPC codes to me at a Guild meeting.

Many thanks for supporting this cause.

Rita Pennington

Quilts of Valor Region 6 Coordinator

LOLOOV.blogspot.com

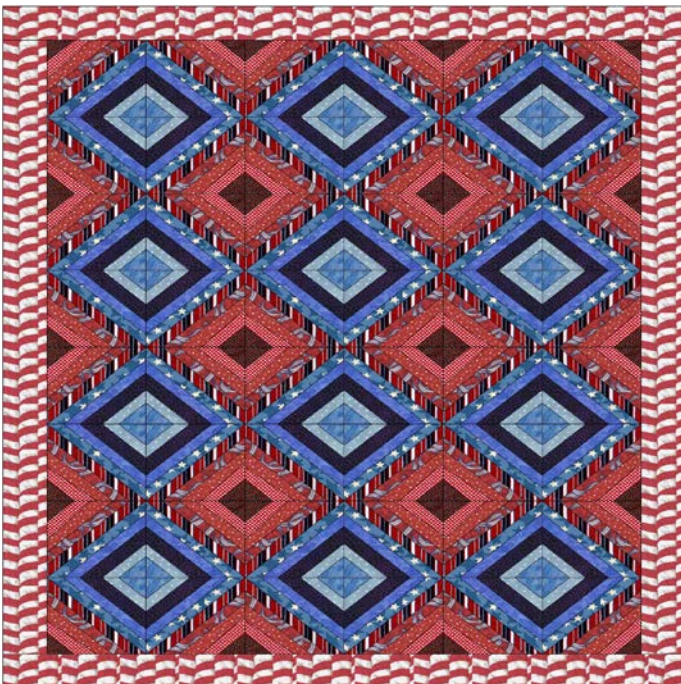
Workshops with Mary Lou Weidman

Village Quilters of Lake Bluff / Lake Forest (www.villagequilters.org) welcomes you to participate in two workshops with Mary Lou Weidman. The first workshop is Monday, May 20th, with Mary Lou's ***Piecing "Stuff" the Fun Way*** and the second workshop is Tuesday, May 21 with Mary Lou's ***Flower Power***. Each workshop is \$50. We hold our workshops at the west branch of the Lake Forest Bank & Trust in Lake Forest IL (easy access from 294/94 via Route 60). If you would like to join us, please email Ellen Granda at ecgranda@comcast.net for more details.

Here is the hyperlink for Mary Lou's website, which describes the workshops: <http://www.marylouquilt designs.com/workshops.aspx>

Happy quilting!

Ellen Granda



Calendar of Events

Check the body of the newsletter for more details. All events take place at Bethlehem Lutheran Church in St. Charles unless otherwise noted.

May Meetings

Annual Banquet: Mon. May 20, 7:00 p.m.

June Meetings

Board Meeting: Tues. June 4, 7:00 p.m.

Evening Guild: Mon. June 24, 7:00 p.m.

Morning Guild: Tues. June 25, 9:30 a.m.

ADVERTISING RATES

1/8 page \$10/issue (business card size)

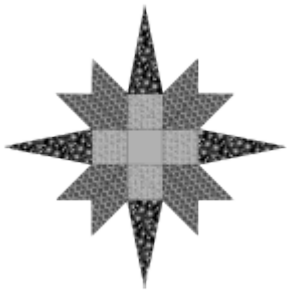
1/4 page \$20/issue

1/2 page \$40/issue

Above rates apply to a single issue. A purchase of the same-size ad for a year (11 issues) earns a 10% discount. Ads accepted only for quilting or quilt-related subjects and must be prepaid. Deadline for ads (getting copy or camera-ready artwork to the Editor) is the first of the month in which you wish the ad to appear. Call or email the Editor if you have any questions.

SUBSCRIPTION INFORMATION

Prairie Star Press Subscription Only Rate: Non-members of PSQG wishing a subscription to the **Prairie Star Press** may subscribe for \$15/year (11 issues). Make check payable to PSQG and send to PSQG, P.O. Box 1460, St. Charles, IL 60174-1460. PSQG trades complimentary issues of the **Prairie Star Press** with other guilds upon request.



Prairie Star Quilters Guild
P. O. Box 1460
St. Charles, IL 60174-1460

FIRST CLASS MAIL

Dated Material